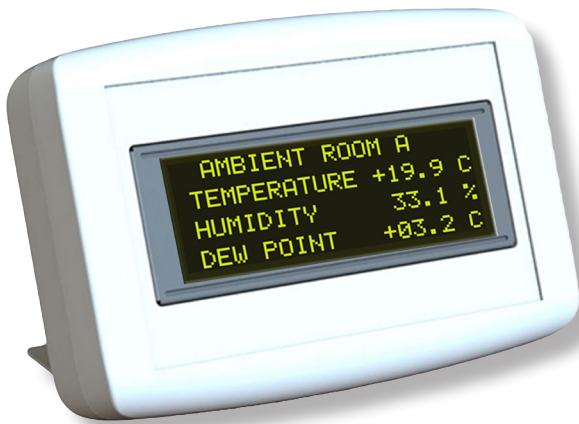


newsteoDIS

Information and alerts in real time



MEASURE ANALYSE ALERT

Newsteo DIS30 and DIS31 wireless display devices inform and alert people in area close to dataloggers.

DISPLAY MEASURES & ALERT

They permanently display measurements and alert messages (thresholds, low battery...) with strong sound signal.

Sound signal can be stopped by a manual acknowledge on push button.

APPLICATIONS

- Pharmacy & laboratories
- Food fridges
- Construction Building
- Transportation
- Warehouses

POWER SUPPLY

- DIS 30 : 5V micro-USB connector
- DIS 31 : 12V cigar lighter connector

TECHNICAL CHARACTERISTICS

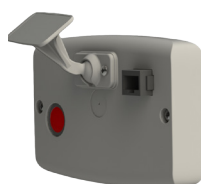
- Display up to 20 loggers
- 80 dB strong sound signal
- Internal RF antenna
- Radio ISM 868 MHz
- Radio range: DIS30: 200 meters in free land, can be increased with an adapted antenna. DIS31 : 50 meters
- Wireless communication with both Local dataloggers & radio Receivers (PC or Collector)

DIS 30



Office version

DIS 31



Truck cabin version

