

2013

LOG313 - LOG000D78

15 oct. 2013 - 16 oct. 2013

[RAPPORT DE MESURE]

Généré le 16 octobre 2013, à 00:01

Sommaire

Sommaire.....	2
Résumé du rapport de mesure.....	3
Graphiques.....	4
Alertes.....	5
Tableaux complets.....	6

Résumé du rapport de mesure

Informations générales :

Numéro de série	LOG000D78
Description	LOG31-3_000D78
ID	3448
Type de produit	LOG313
Version du script	V2.0.7.0

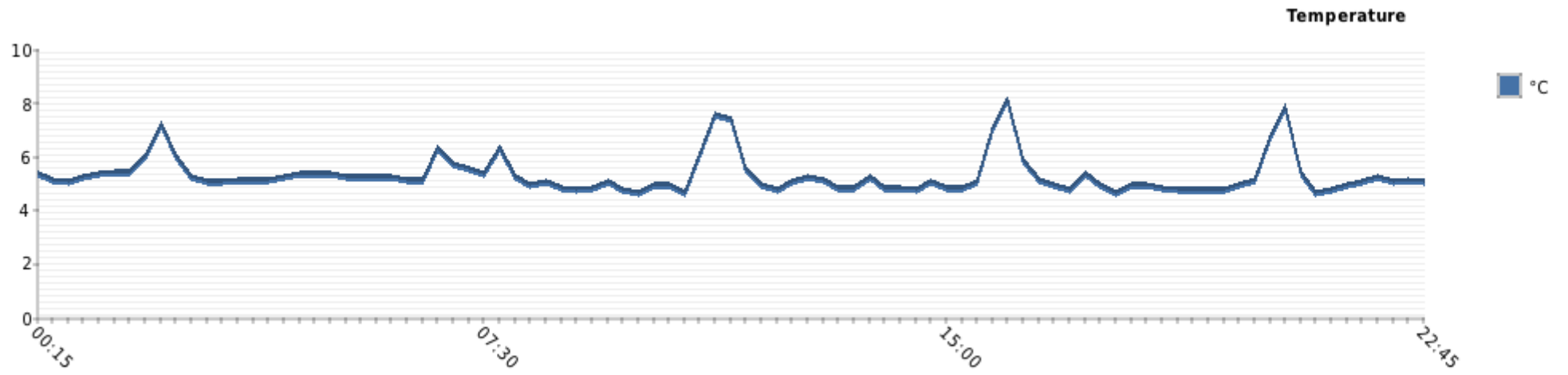
Campagne d'enregistrements : (lors du téléchargement des mesures)

Début de la campagne :	le 15/10/13 à 00:01
Fin de la campagne :	le 16/10/13 à 00:01
Enregistrements	91
Nombre d'alertes	0

Statistiques : (lors du téléchargement des mesures)

Capteur	Enregistrements	Min	Max	Moyenne
Temperature	91	4.62°C	8.04°C	5.27°C

Graphiques



Alertes

Pas d'alertes pour ce bloc

Tableaux complets

Paquet	Date	Heure	Temperature
20222	15/10/13	00:15:00	5.30044°C
20223	15/10/13	00:30:00	5.10503°C
20221	15/10/13	00:45:00	5.00733°C
20224	15/10/13	01:00:00	5.20274°C
20225	15/10/13	01:15:00	5.30044°C
20226	15/10/13	01:30:00	5.39814°C
20227	15/10/13	01:45:00	5.39814°C
20228	15/10/13	02:00:00	5.98437°C
20229	15/10/13	02:15:00	7.15682°C
20230	15/10/13	02:30:00	5.98437°C
20231	15/10/13	02:45:00	5.20274°C
20232	15/10/13	03:00:00	5.00733°C
20233	15/10/13	03:15:00	5.00733°C
20234	15/10/13	03:30:00	5.10503°C
20235	15/10/13	03:45:00	5.10503°C
20236	15/10/13	04:00:00	5.10503°C
20237	15/10/13	04:15:00	5.20274°C
20238	15/10/13	04:30:00	5.30044°C
20239	15/10/13	04:45:00	5.30044°C
20240	15/10/13	05:00:00	5.30044°C
20241	15/10/13	05:15:00	5.20274°C

20242	15/10/13	05:30:00	5.20274°C
20243	15/10/13	05:45:00	5.20274°C
20244	15/10/13	06:00:00	5.20274°C
20245	15/10/13	06:15:00	5.10503°C
20246	15/10/13	06:30:00	5.10503°C
20247	15/10/13	06:45:00	6.27748°C
20248	15/10/13	07:00:00	5.69126°C
20249	15/10/13	07:15:00	5.49585°C
20250	15/10/13	07:30:00	5.30044°C
20251	15/10/13	07:45:00	6.27748°C
20252	15/10/13	08:00:00	5.20274°C
20253	15/10/13	08:15:00	4.90962°C
20254	15/10/13	08:30:00	5.00733°C
20255	15/10/13	08:45:00	4.81192°C
20256	15/10/13	09:00:00	4.71422°C
20257	15/10/13	09:15:00	4.81192°C
20258	15/10/13	09:30:00	5.00733°C
20259	15/10/13	09:45:00	4.71422°C
20260	15/10/13	10:00:00	4.61651°C
20261	15/10/13	10:15:00	4.90962°C
20262	15/10/13	10:30:00	4.90962°C
20263	15/10/13	10:45:00	4.61651°C
20264	15/10/13	11:00:00	5.98437°C
20265	15/10/13	11:15:00	7.54763°C

20266	15/10/13	11:30:00	7.35222°C
20267	15/10/13	11:45:00	5.49585°C
20268	15/10/13	12:00:00	4.90962°C
20269	15/10/13	12:15:00	4.71422°C
20270	15/10/13	12:30:00	5.00733°C
20271	15/10/13	12:45:00	5.20274°C
20272	15/10/13	13:00:00	5.10503°C
20273	15/10/13	13:15:00	4.81192°C
20274	15/10/13	13:30:00	4.81192°C
20275	15/10/13	13:45:00	5.20274°C
20276	15/10/13	14:00:00	4.81192°C
20277	15/10/13	14:15:00	4.81192°C
20278	15/10/13	14:30:00	4.71422°C
20279	15/10/13	14:45:00	5.00733°C
20280	15/10/13	15:00:00	4.81192°C
20281	15/10/13	15:15:00	4.81192°C
20282	15/10/13	15:30:00	5.00733°C
20283	15/10/13	15:45:00	7.05911°C
20284	15/10/13	16:00:00	8.03615°C
20285	15/10/13	16:15:00	5.78896°C
20286	15/10/13	16:30:00	5.10503°C
20287	15/10/13	16:45:00	4.90962°C
20288	15/10/13	17:00:00	4.71422°C
20289	15/10/13	17:15:00	5.30044°C

20290	15/10/13	17:30:00	4.90962°C
20291	15/10/13	17:45:00	4.61651°C
20292	15/10/13	18:00:00	4.90962°C
20293	15/10/13	18:15:00	4.90962°C
20294	15/10/13	18:30:00	4.81192°C
20295	15/10/13	18:45:00	4.71422°C
20296	15/10/13	19:00:00	4.71422°C
20297	15/10/13	19:15:00	4.71422°C
20298	15/10/13	19:30:00	4.71422°C
20299	15/10/13	19:45:00	4.90962°C
20300	15/10/13	20:00:00	5.10503°C
20301	15/10/13	20:15:00	6.766°C
20302	15/10/13	20:30:00	7.84074°C
20303	15/10/13	20:45:00	5.30044°C
20304	15/10/13	21:00:00	4.61651°C
20305	15/10/13	21:15:00	4.71422°C
20306	15/10/13	21:30:00	4.90962°C
20307	15/10/13	21:45:00	5.00733°C
20308	15/10/13	22:00:00	5.20274°C
20309	15/10/13	22:15:00	5.00733°C
20310	15/10/13	22:30:00	5.10503°C
20311	15/10/13	22:45:00	5.00733°C