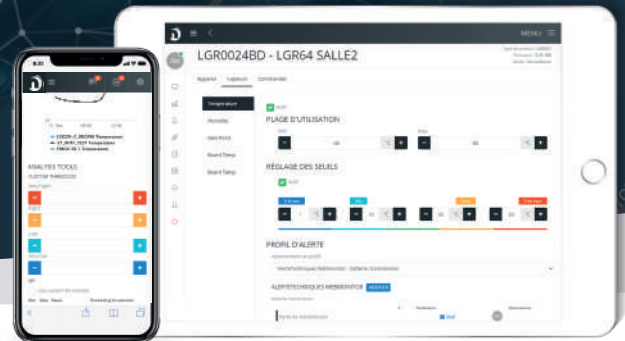


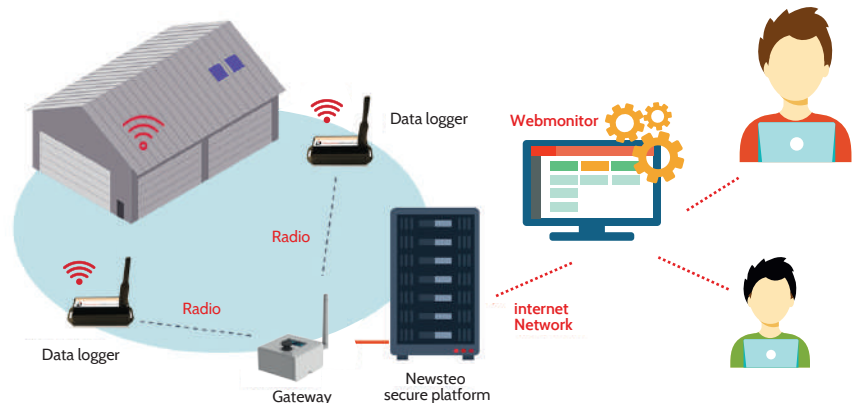
# WEBMONITOR

Real-time web-based application  
for tracking and alert

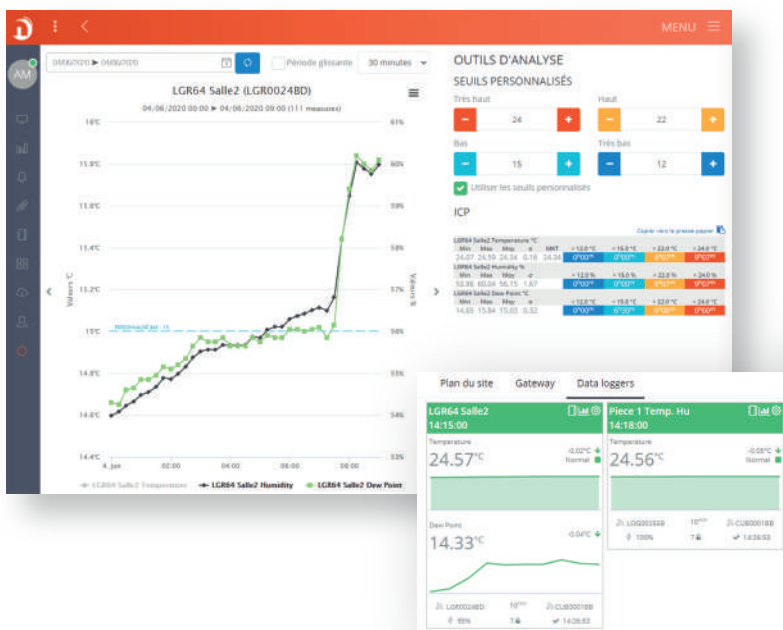


## IIOT AND CONNECTED SENSORS IN THE CLOUD

Activate and display  
the measurements your  
Newsteo connected  
sensors in a single web  
interface, Webmonitor.



## A SIMPLE AND INTUITIVE INTERFACE



- Multi-user
- Visualization of all sensors connected
- Ability to display measurements of different sites
- CFR21 Part11 Compliant

Appareil	Capteur	Période d'alerte	Durée	Statut
LGR64 Salle2 LGR0024BD	Humidity	03/06/2020 à 19:30:00 03/06/2020 à 20:00:00	0'30"	Fermée
Piece 1 Temp. Hu LGR002558	Temperature	03/06/2020 à 15:58:00 03/06/2020 à 16:18:00	4'00"	Fermée
Piece 1 Temp. Hu LGR002558	Temperature	03/06/2020 à 16:48:00 03/06/2020 à 17:08:00	4'50"	Fermée

## ▲ ADVANTAGES

The Newsteo application is accessible directly on the web on the site [www.newsteo-webmonitor.com](http://www.newsteo-webmonitor.com). It allows remote supervision from anywhere in the world and on all your devices (PC, tablet, SmartPhone).



### Real-time traceability

- Visualization of measurements in real time on a single interface
- Data transmission by Ethernet, WiFi, 3G / 4G
- Multi-point and multi-site solution
- Ideal as part of a HACCP, GDP approach



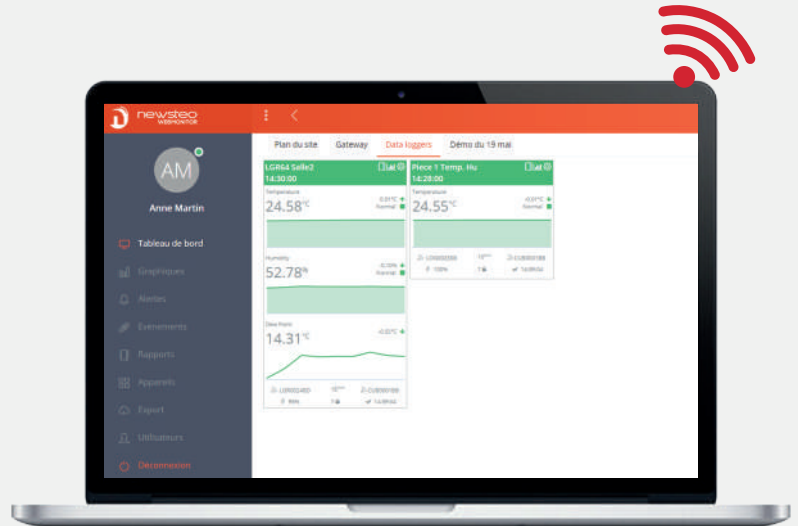
### Web based application

- Storage of measurements on the secure Newsteo's platform, measurement history available immediately in the event of an inspection
- No data loss
- No software to install
- No travel on site



### Alerts

- Sending E-mail and / or SMS in the event of a problem: Threshold measurements / Low battery / Transmission loss



### Easy settings

- Dynamic dashboards
- User rights management
- Automatic sending of PDF reports (day, week, months) grouping alerts and sensor measurements
- Excel export

## ▲ WEBMONITOR API

You already have your software, your tracking application?

Control of your Newsteo connected sensors can be integrated with third-party systems via an API: customize settings, sensors data collect.

