

RF-to-USB KEY driver stable version installation

Table des matières

1	Context	2
2	Process	2

Revisions :

27 mai 2011 FP English version

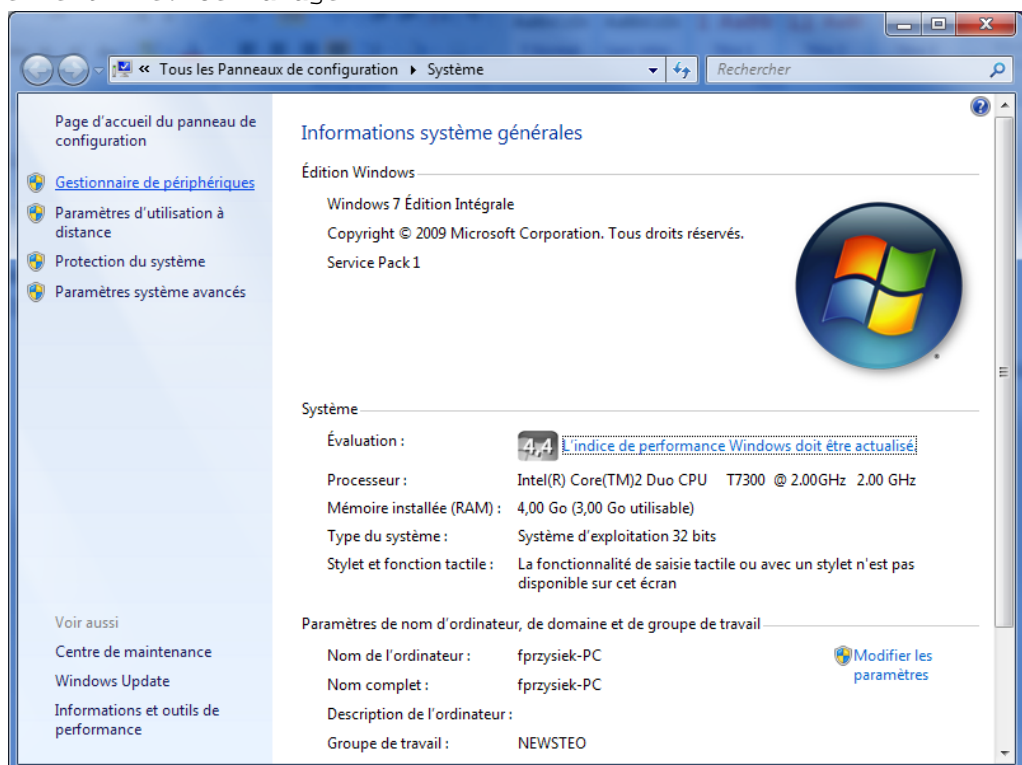
1 Context

Newsteo faces some issues recently with the USB driver due to a Windows update that is automatically processed, and installs a bugged version of the driver without asking anything.

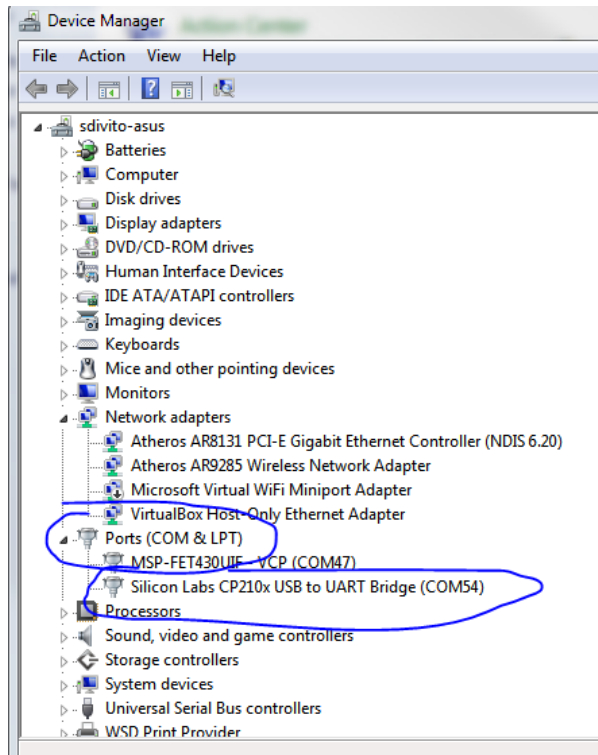
This document describes the potential problem and the solution to fix it.

2 Process

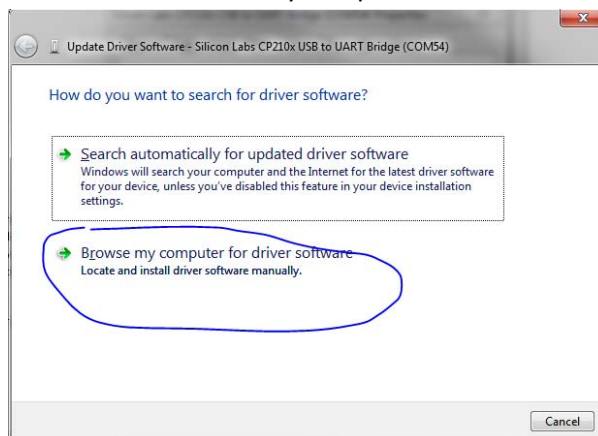
1. Close RF Monitor
2. Plug the RFtoUSB key
3. Wait for the driver to be mounted
4. Get the File "Windows_XP_S2K3_Vista_7_5.4.29_ok.zip" on newsteo server, and unzip it somewhere on your PC (in "My documents" or on the desktop for example, it will be suppressed at the end of the process).
5. Open the Device Manager, there are several ways to do that : for example
6. Press and maintain [Windows]+Pause, which opens the main window
7. Select on the left "Device Manager"



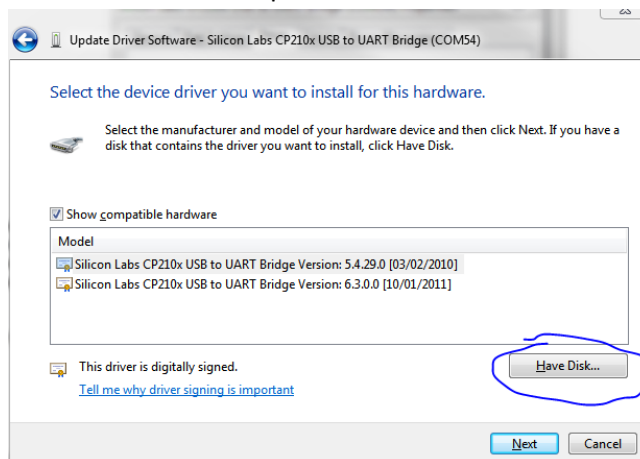
In the device manager, open the Ports section :



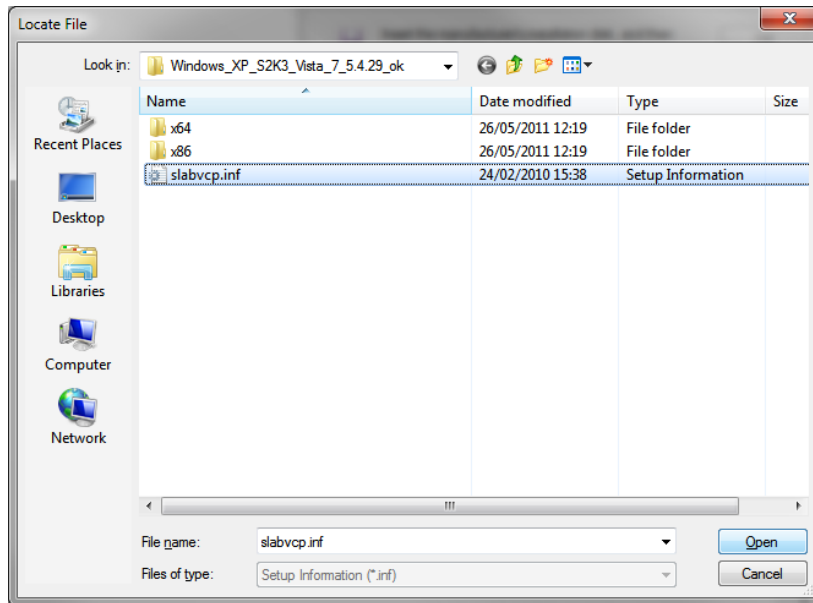
Then right-click on the line « Silicon Labs ... » and choose the line « update the driver » and “Browse my computer”



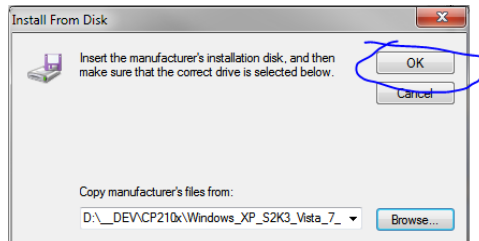
And then choose the specific device driver



Then browse the computer to indicate the proper folder.
Then select the slabvcp.inf file, and validate by clicking on “Open”

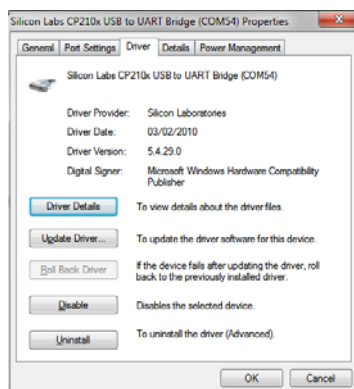


Then click Ok, Next and Close



Then, you can check that the correct version of the driver is loaded by Windows

This version of the driver is fully approved by RF Monitor 4 and later.



End of this process.