



User Guide for Webmonitor Interface

Purpose:

User guide for Newsteo Webmonitor with LOGGERS (LOG, LGR, LGS...) in MONITORING or RECORD modes

Technical support:

For any question, remark or suggestion concerning this product, please contact your retailer.

Commercial contact:

Please have a look at our website www.newsteo.com, or email any request at: sales@newsteo.com.

Compatibility:

Webmonitor is compatible with all the Newsteo™ products.

Webmonitor is compatible with Firefox, Chrome, Internet Explorer 10; Webmonitor is partially compatible with other versions of Internet Explorer.

Purpose:

Main user manual for the network interface WEBMONITOR CFR21

1	PRESENTATION	4
1.1	Introduction	4
1.2	Park overview	5
1.3	General description	6
2	INSTALLATION	6
2.1	Start Webmonitor	6
2.2	Start your collector.....	7
2.2.1	COL22.....	7
2.3	Start a device.....	8
2.4	First information	8
2.4.1	Alerts.....	8
2.4.2	Messages	8
2.4.3	Help.....	8
3	USING WEBMONITOR INTERFACE.....	9
3.1	Dashboard.....	9
3.1.1	Last measurement	9
3.1.1.1	Last measurement-Default display	9
3.1.1.2	Last measurement-Reach the alert menu.....	10
3.1.1.3	Last Measurement - Make a search	10
3.1.1.4	Last Measurement - Sort the lines	10
3.1.1.5	Last Measurement - Limit the number of records per page	10
3.1.1.6	Last Measurement - Navigate in different pages.....	11
3.1.1.7	Last Measurement – Filter on a group of loggers	11
3.1.1.8	Last Measurement - Reach the graph	11
3.1.2	Graphs.....	12
3.1.2.1	Graph-Load all the data	12
3.1.2.2	Graphs options.....	13
3.1.2.2.1	Sensor filter.....	13
3.1.2.2.2	Graphic cursors	13
3.1.2.2.3	Date filter	13
3.1.2.2.4	Zoom.....	15
3.1.2.3	Comment the graph	16
3.1.2.4	Export csv	16
3.1.2.5	Graph Print.....	16
3.2	Log	17
3.2.1	Alerts.....	17
3.2.1.1	Alert-Default display	17
3.2.1.2	Comment on alerts	18
3.2.1.2.1	Alert - Filter on comment	18
3.2.1.2.2	Alert -Comment alerts	18
3.2.1.3	Alert -Make a search	19
3.2.1.4	Alert -Sort the lines	19
3.2.1.5	Alert -Limit the number of records per page	19
3.2.1.6	Alert -Navigate in different pages	19
3.2.2	Events	20
3.2.2.1	Events – Default Display.....	20
3.2.2.2	Comment events.....	21
3.2.2.2.1	Events - Filter on comment.....	21
3.2.2.2.2	Events -Comment an event	21

- 3.2.2.3 Events - Make a search 21
- 3.2.2.4 Events - Sort the lines..... 21
- 3.2.2.5 Events - Limit the number of records per page..... 21
- 3.2.2.6 Navigate in different pages 21
- 3.3 Reports..... 21**
- 3.4 Settings 22**
 - 3.4.1 Devices 22
 - 3.4.1.1 Devices - Default display 22
 - 3.4.1.2 Devices - Make a search 23
 - 3.4.1.3 Devices - Sort the lines 23
 - 3.4.1.4 Devices - Limit the number of records per page 24
 - 3.4.1.5 Devices - Navigate in different pages 24
 - 3.4.1.6 Configuration 24
 - 3.4.1.6.1 Configuration of loggers – Identification, RF Settings, Time Period, Threshold 24
 - 3.4.1.6.2 Configuration of COL- – Identification, RF Settings, COL settings..... 28
 - 3.4.1.7 Command 30
 - 3.4.1.7.1 Command - Reload 31
 - 3.4.1.8 Command - Hibernate..... 31
 - 3.4.1.9 Command - Erase data 31
 - 3.4.1.10 Command list 31
 - 3.4.1.11 Example of a Command transmission 32
 - 3.4.2 Firmware 32
 - 3.4.3 Interface..... 33
 - 3.4.4 E-mail server 33
 - 3.4.5 Pdf report..... 34
 - 3.4.6 Loggers alerts..... 35
 - 3.4.7 Loggers group 36
 - 3.4.8 Manage users..... 37
 - 3.4.8.1 Users 38
 - 3.4.8.2 Group of users..... 39
 - 3.4.8.3 Groups permissions..... 40
 - 3.4.8.4 Other option..... 41
- 3.5 Logout 41**
- 4 ANNEX – GENERAL DESCRIPTION OF THE RUNNING MODE OF LOGGERS..... 42**

1 Presentation

1.1 Introduction

Newsteo WebMonitor interface is designed to manage Newsteo products: loggers, trackers and builders.



LOG



LGR



LGS – LGJ - LGW ...



TRK – TRE - TRP



BUILDER

Those products are using radio transmission (ISM 868MHz for Europe, 915MHz for North America) for:

- Radio transmission of measurements
- Configuration (measurement period, alert thresholds, RF-settings ...)
- Calibration
- Update (firmware download)

It is necessary to use a NEWSTEO Collector (COL) to communicate with loggers.



COL22



COL11



COL51

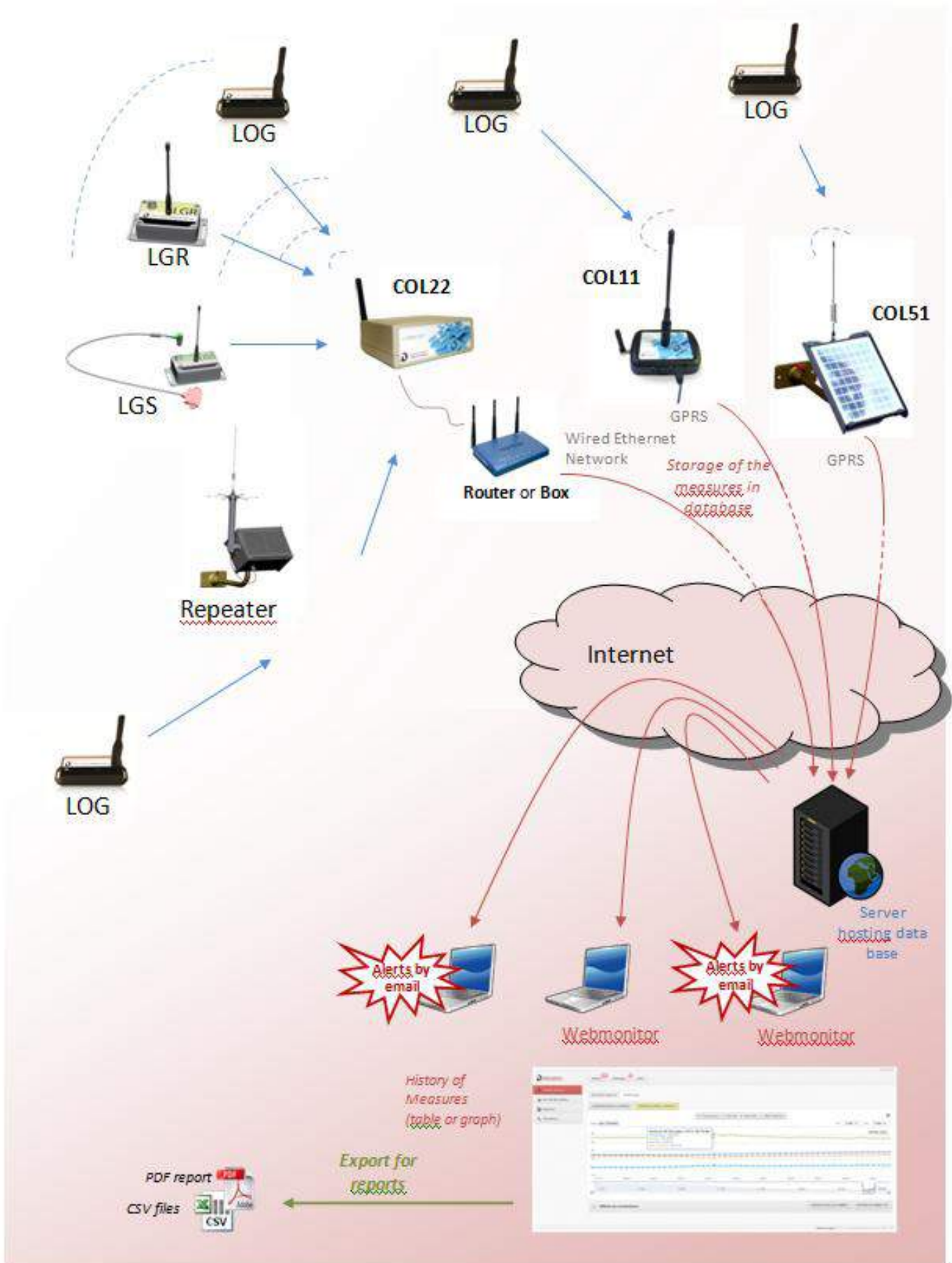
Before using products, you need to open Webmonitor interface by following the link:

<https://www.newsteo-webmonitor.com>

Then you need to start the Collector before any other loggers.

Just follow carefully instructions in this document if you are not familiar with Newsteo products.

1.2 Park overview



1.3 General description

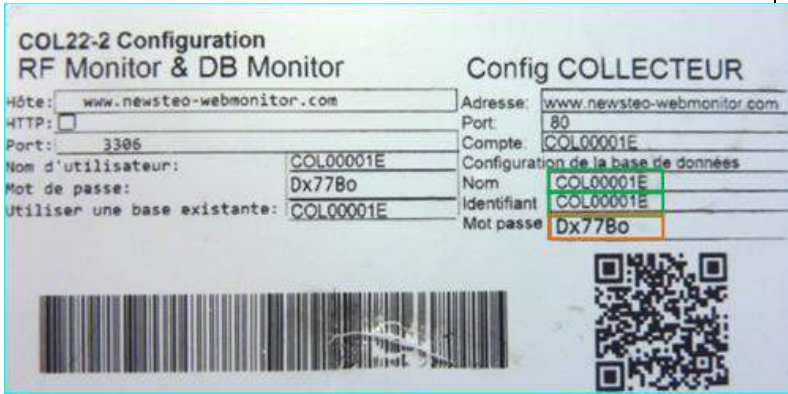

WebMonitor main functionalities are:

- Get the list of all NEWSTEO devices detected in the area
- Configure RF settings (channel)
- Update device firmware
- Configure the period of measures
- Configure sensor thresholds and alert levels
- Configure the email alerts
- Collect measures of loggers (using a collector)
- Display measures
- Store measures in the database
- Generate CSV or PDF files reports
- Configure and generate automatic reports
- Manage users

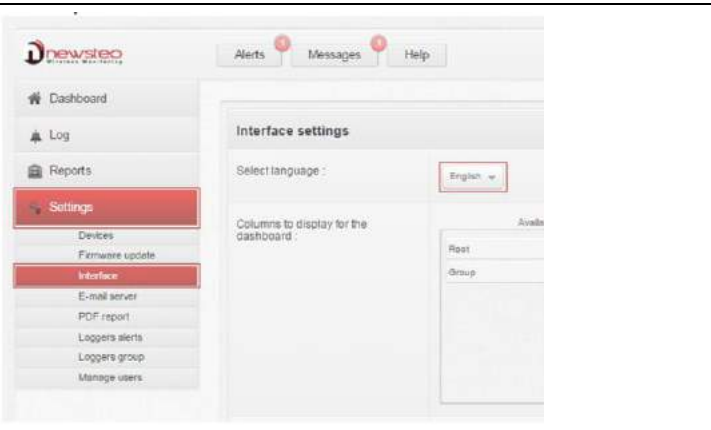
2 Installation

- We recommend the use of **Google Chrome**.
- Compliant with Mozilla Firefox, Internet Explorer 10 & 11.

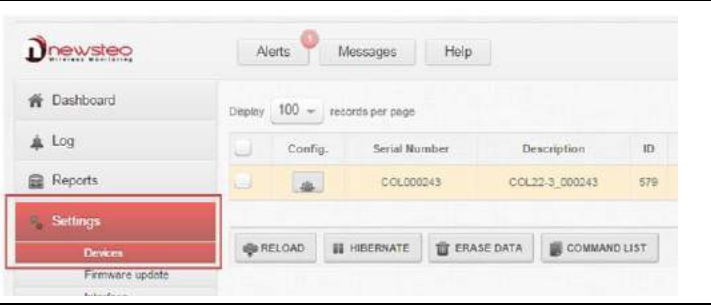
2.1 Start Webmonitor

<p>At the back of your COL, you will find the technical information required to connect your database:</p> <ul style="list-style-type: none"> • Database Name • Login • Password 	
<p>Open your Internet Browser.</p> <p>Enter: https://www.newsteo-webmonitor.com</p> <p>Do not forget to select the language.</p> <p>Enter Database Name and Login.</p> <p>Enter Password.</p> <p>Click on [LOG IN].</p>	

If necessary:
 Click on **[Settings]** **[Interface]** (or **[Paramètres]** **[Interface]**) to modify the language.



Click on **[Settings]** **[Devices]**.
 Your collector appears in the main screen.
The line is orange:
 It means that Collector still not communicates with the server.



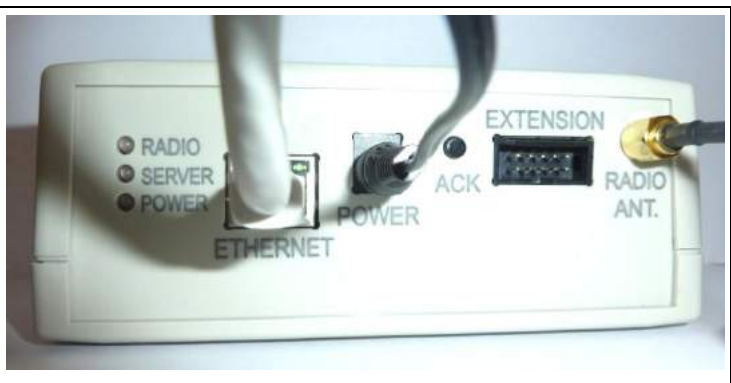
2.2 Start your collector

2.2.1 COL22


LED Description:
RADIO: Indicator lights for Radio reception.
SERVER: Indicator lights for Ethernet communication.
POWER: Indicator lights for Power supply.

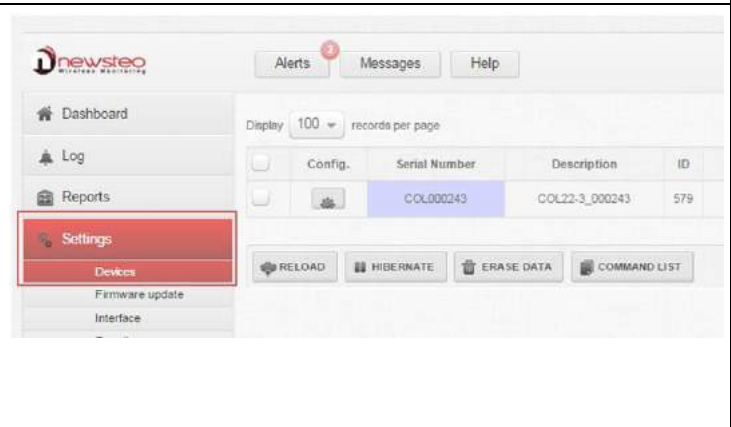
Collector connection:

- Screw the antenna on RADIO ANT.
- Plug the Ethernet cable on ETHERNET.
- Plug the power supply on POWER.



You must wait for the Led "server" and the LED "power" are lit without flashing.

Start Webmonitor on the database provided by NEWSTEO (see paragraph: 0).
 Click on **[Settings]**.
 Click on **[Devices]**.
 After the BEEP sound, refresh the internet page
 or press F5.
The Line of your COL appears in white, COL is now correctly detected.



2.3 Start a device

Once the collector is properly started, start your device by passing the magnet on it.



Default mode for most of NEWSTEO devices is "Monitoring" mode with a period of 10s on the Radio Channel 1.

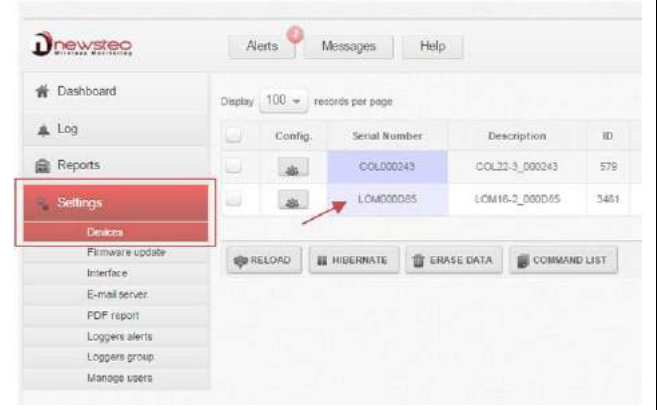
Click on [**Settings**].
Click on [**Devices**].

After the BEEP sound of the COL, wait 10 seconds.

Refresh the internet page or press F5.



The logger appears in the list of devices.



2.4 First information

2.4.1 Alerts

When you start your COL and your Webmonitor for the first time, you have at least "1" for **Alerts**.

Click on [**Alerts**].
It opens [**Log**][**Alerts**] menu.
You can see the line corresponding to the first start of your COL (manufacturing).
To suppress the alert status, you must comment the alert (see **0**

Comment on alerts).



2.4.2 Messages

When you start your COL and your Webmonitor for the first time, you have "1" for **Messages**.

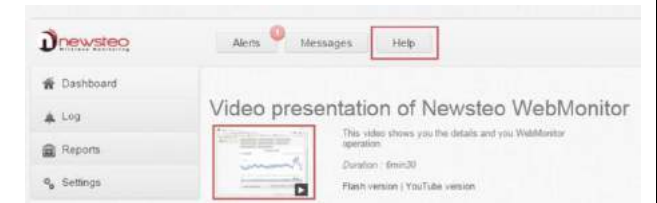
Click on [**Messages**].
It opens the Welcome message.
In this zone, you will be informed of the novelties for your Webmonitor when a new version will be on line.



2.4.3 Help

Click on [**Help**].

Click on the video to visualize the user guide video version.



3 Using WebMonitor interface

3.1 Dashboard

3.1.1 Last measurement

Click on [Dashboard].

Click on [Last Measurements].

Get the list of the last measurement of each logger.



3.1.1.1 Last measurement-Default display

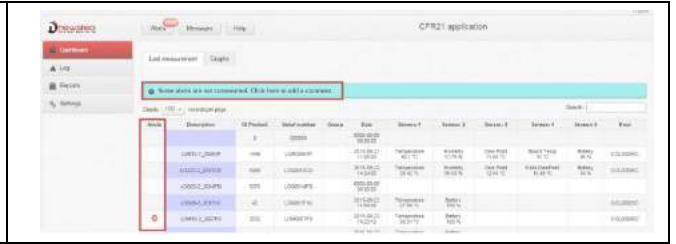
Alerts	Description	ID Product	Serial number	Group	Date	Sensor 1	Sensor 2	Sensor 3	Sensor 4	Sensor 5	Root
		0	000000		2020-09-20 02:00:00						
	RSD - Newtec	123	COL00000C		2015-09-22 14:18:33	Battery 100 %					COL00000C
	Tribunal su	12	LOG00000C		2015-09-22 14:18:00	CO ₂ 787 ppm	Pressure 988.2 mbar	Temperature 28.1 °C	Humidity 24.2 %RH	Battery 99 %	COL00000C
	LOG10_0_0005P	1990	LOG00000P		2015-09-21 11:00:00	Temperature 48.1 °C	Humidity 17.76 %	Dew Point 11.05 °C	Board Temp 31 °C	Battery 96 %	COL00000C
	TEST CARBONLACE	4260	LOG0010A4		2015-09-19 04:00:00	PT1000 Temp 20.3 °C	Board Temp 25.1 °C	Battery 100 %			COL00000C
	LOG02_0_0013CD	9069	LOG0013CD		2018-09-02 14:04:00	Temperature 25.42 °C	Humidity 39.53 %	Dew Point 12.94 °C	Delta DewPoint 15.48 °C	Battery 84 %	COL00000C
	LOG02_0_0014FD	8373	LOG0014FD		2020-09-08 00:00:00						
	LOG06_0_00171C	42	LOG00171C		2015-09-22 13:53:00	Temperature 27.88 °C	Battery 100 %				COL00000C
	LOM16_0_0007P0	2072	LOM0007P0		2015-09-22 14:23:12	Temperature 30.31 °C	Battery 100 %				COL00000C
	LOM19_0_00085A	2132	LOM00085A		2015-09-22 14:17:18	Temperature 26.19 °C	Battery 100 %				COL00000C

- Alerts :**
 This icon shows if an alarm is detected on the corresponding product. (see **0 Last measurement-Reach the alert menu**).
- Description:**
 A description that you can modify to easily identify your device (see **3.4.1.6.1.1 Configuration of loggers – Identification**).
- ID Product:**
 A number that you can modify to easily identify your device (see **3.4.1.6.1.1 Configuration of loggers – Identification**).
- Serial Number:**
 Single device identifier. This serial number corresponds to the one printed on the product label.
- Group:**
 Name of the group to which the device belongs. (see **3.4.7 Loggers group**)
- Date:**
 Date and time of the last measure for each device.
- Sensor 1/2/3:**
 It indicates the value of the last measure for loggers. Some loggers can have several sensors (ex: temperature, humidity, board temp (temperature of the electronic card), battery level, ...).
- Root:**
 Serial number of the COL used by the logger to communicate with the server.

3.1.1.2 Last measurement-Reach the alert menu

If there are new alerts which have not been commented yet.
Click on **[Click here to add a comment]**.

It opens the **[Log][Alerts]** menu.
(see **3.2.1 Alerts**).



3.1.1.3 Last Measurement - Make a search

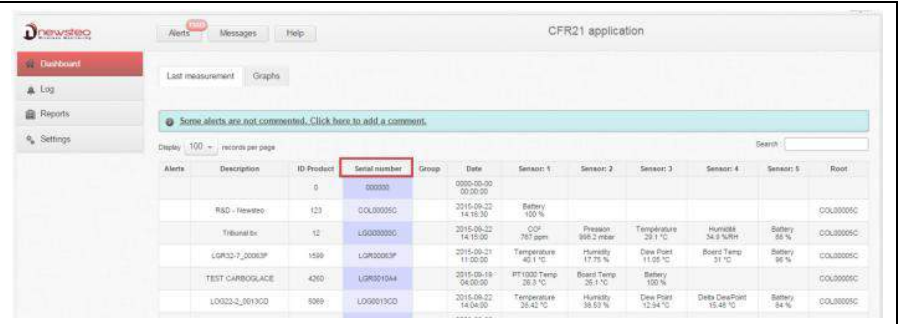
Enter the characters which correspond to your search.



3.1.1.4 Last Measurement - Sort the lines

It is possible to rank the instrument panel in decreasing or ascending alphabetic order of each column except for "Alerts".

For example:
Click on **[Serial number]**.



3.1.1.5 Last Measurement - Limit the number of records per page

Click on **[10]**, **[25]**, **[50]** or **[100]**.

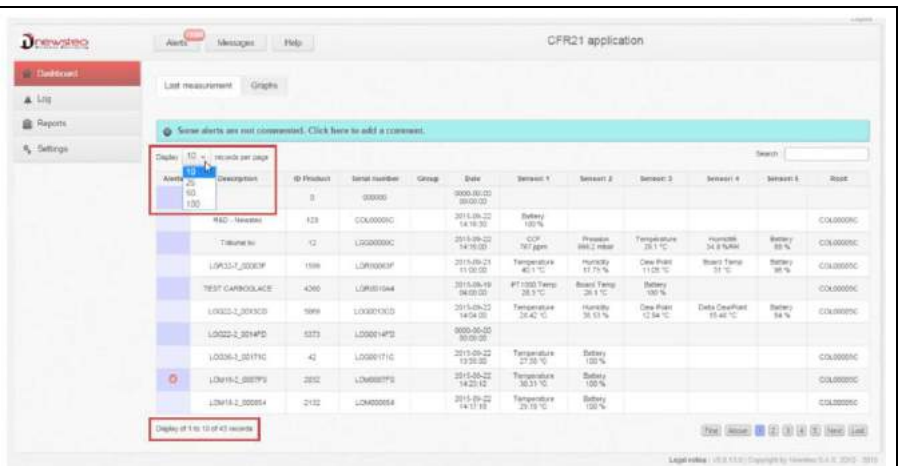
It changes the number of records displayed per page.

Example :

Display 10 records per page.

It displays devices from 1 to 10 of 43 records that is to say the 10 first devices.

See **3.1.1.6 Last Measurement - Navigate** in different pages to visualize the other devices 10 per 10.

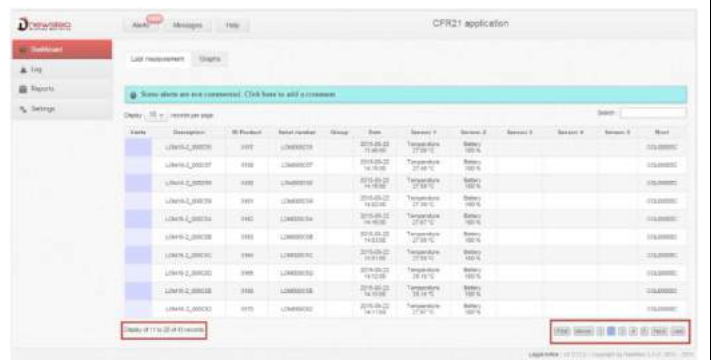


3.1.1.6 Last Measurement - Navigate in different pages

Click on [2].
Get the second page of the devices list.

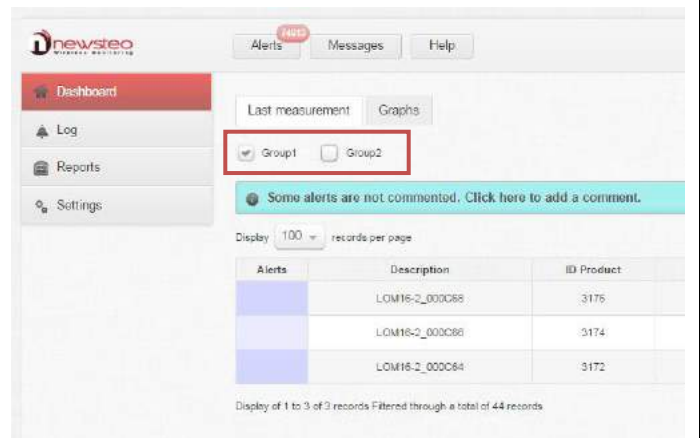
Example :
Display 10 records per page.
It displays devices from 11 to 20 of 43 records that is to say the 10 devices of the second page.

Navigate from one page to another one by using [Above] and [Next] buttons.
Directly reach the first page and the last page by using [First] and [Last] buttons.



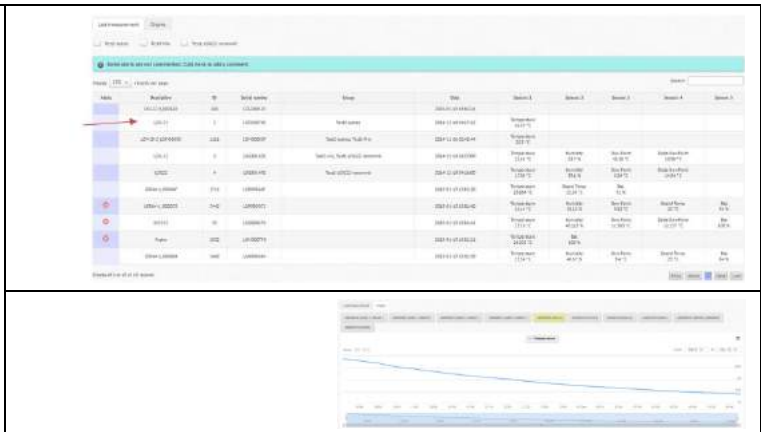
3.1.1.7 Last Measurement – Filter on a group of loggers

To use those filters, you must previously create groups of loggers (see 3.4.7 Loggers group).



3.1.1.8 Last Measurement - Reach the graph

Directly reach the graph of a logger in the [Graphs] tab if you click on its line in [Last Measurement].



3.1.2 Graphs

Click on [**Dashboard**].

Click on [**Graphs**].

Get the graph of the last logger selected in the tab [Last Measurement].



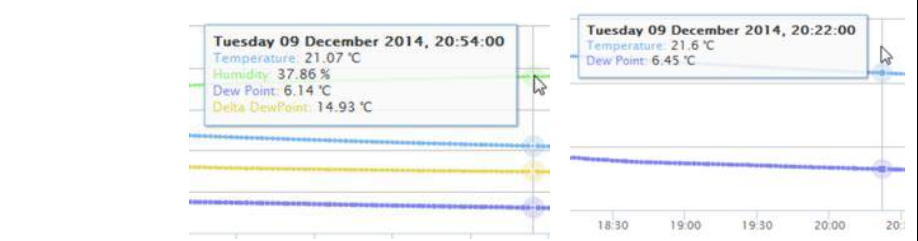
If you have less than 20 loggers, there is a tab for each logger and you can directly reach the corresponding graph by clicking on the tab.

If you have more than 20 loggers, it is necessary to select the logger in the [Last measurement] tab to visualize its graph.



Get precisely a measure by pointing the graph with the mouse.

Example: With 4 sensors – With 2 sensors

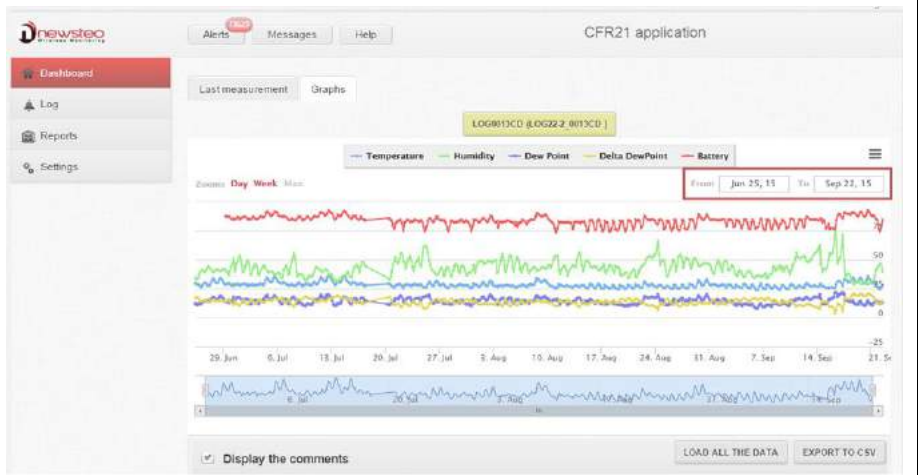


3.1.2.1 Graph-Load all the data

By default, only last measurements are displayed in the graphs.

Click on [**LOAD THE DATA**].

It displays all the data recorded in the database for the concerned logger.

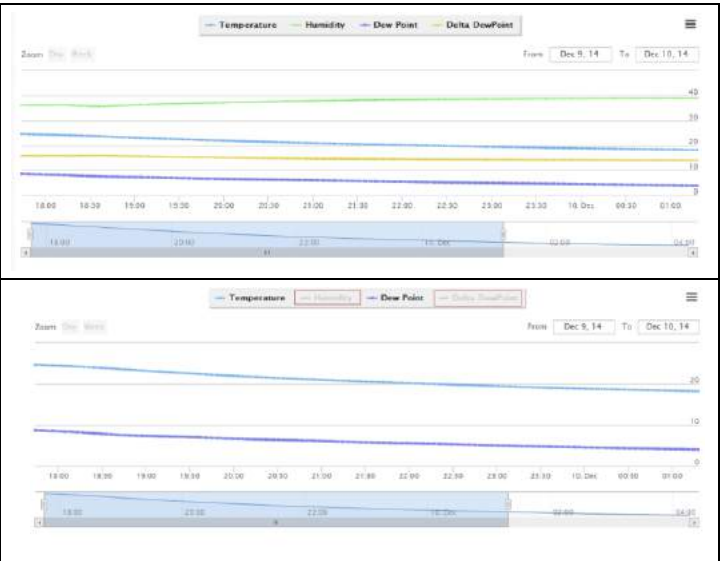


3.1.2.2 Graphs options

3.1.2.2.1 Sensor filter

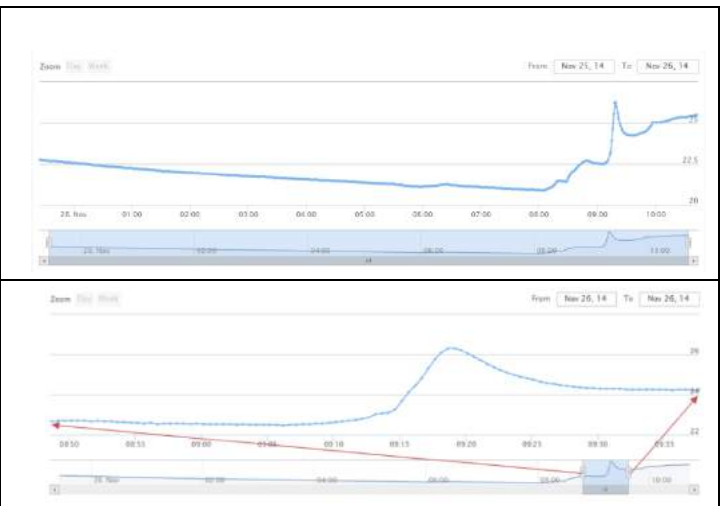
A logger has several sensors.

Delete/add the graph of a sensor by clicking on the corresponding tab.

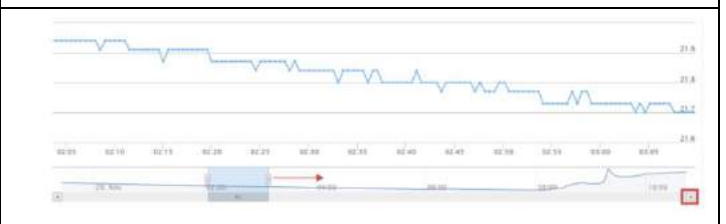


3.1.2.2.2 Graphic cursors

Display a part of the graph by moving the cursors.

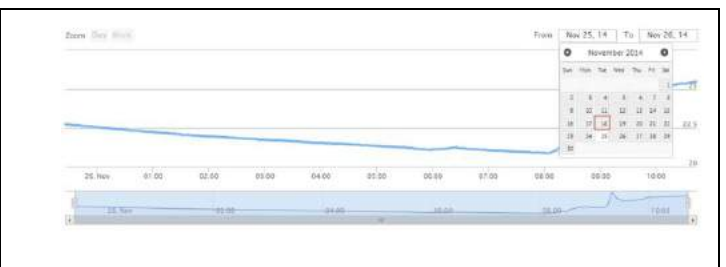


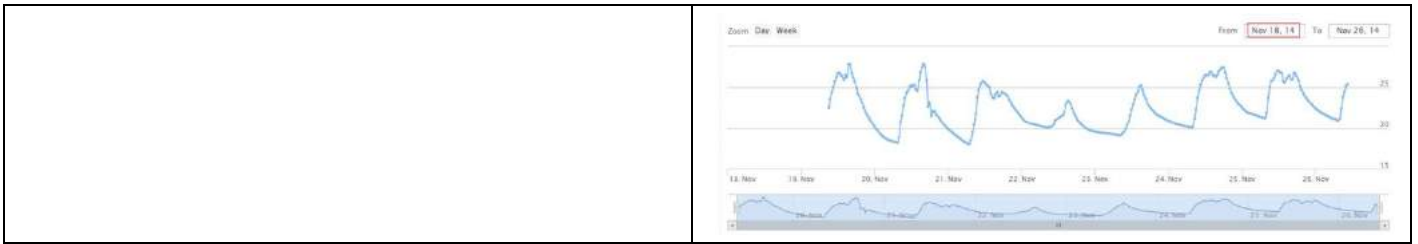
Slightly move the visualization on the graph.



3.1.2.2.3 Date filter

Use Calendar to change graph dates.



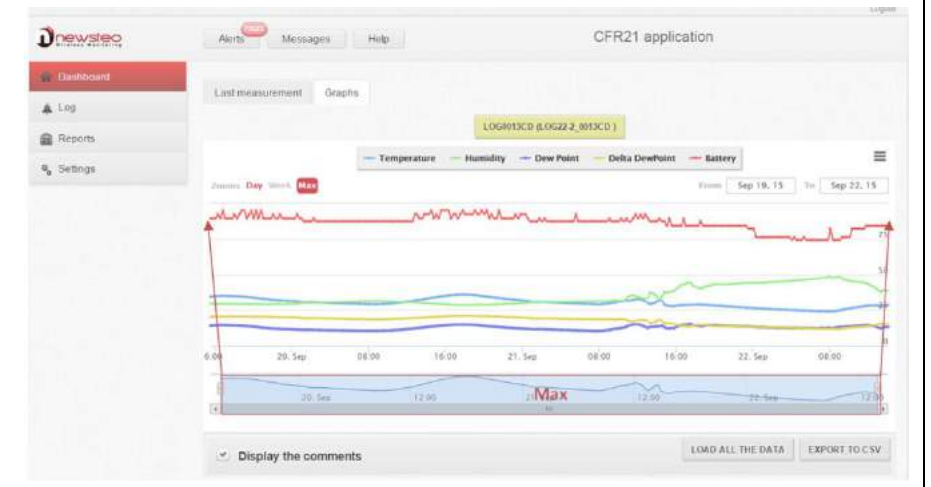


Available quick filters are in red.
Active filter is the red square.

Example:
Available Filter → Max and Day
Active filter → Day



Active filter → Max



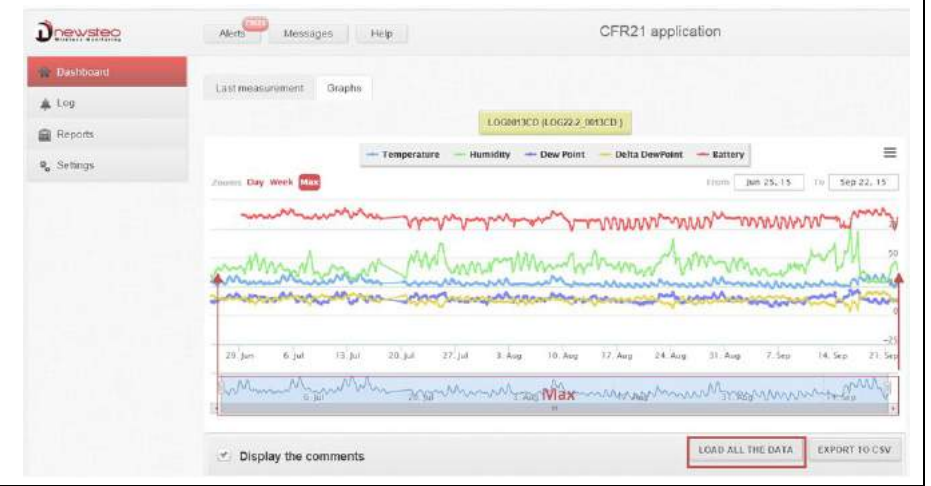
Active filter → Day



Click on [**LOAD ALL THE DATA**].
Visualize all the data for the selected logger.

All the filters are now available:
→ Day, Week, Max

The active filter is Max.



Active filter → Week

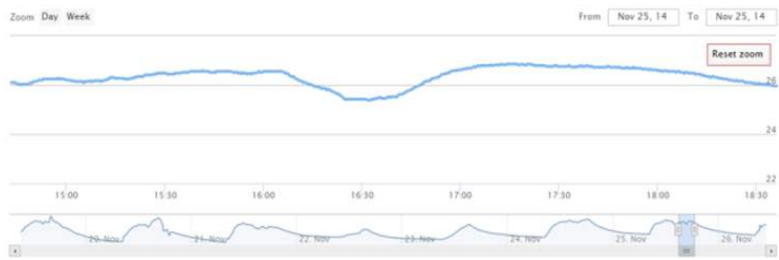


3.1.2.2.4 Zoom

Select a part of the graph to zoom on it.



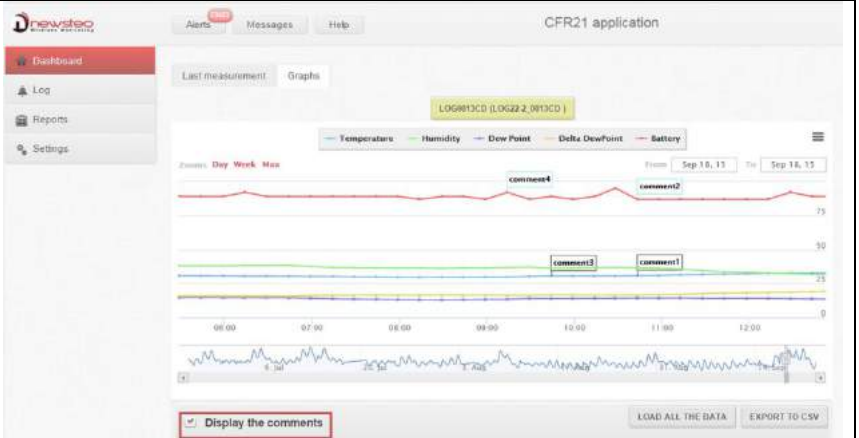
Click on [Reset zoom] to reset the zoom.



3.1.2.3 Comment the graph

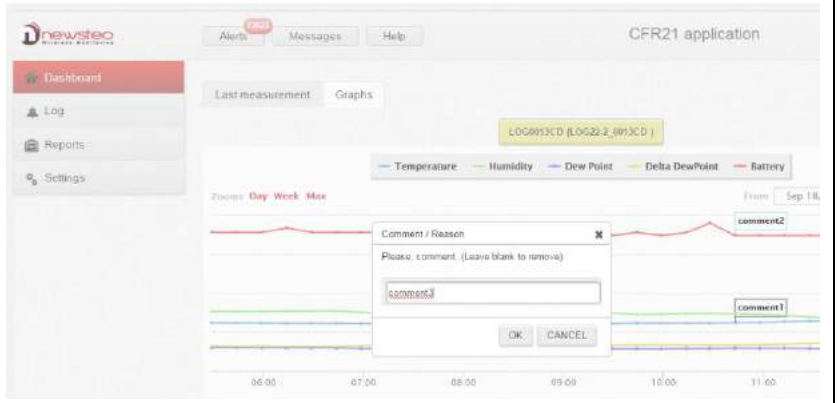
Activate **[Display the comments]** option.

It enables the display of comments on the graph.



Click on a curve point to add a comment. It is possible to add a comment on all the curves.

Delete a comment by editing and erasing its name.



3.1.2.4 Export csv

Click on **[Export to csv]**.



The number of points included in the .csv file created corresponds to the one displayed on the graph.

Date	Temperature	Humidity (%)	Dew Point (°C)	Delta DewPoint (°C)
09/12/2014 22:18	19.96	38.49	5.39	14.57
09/12/2014 22:20	19.93	38.49	5.36	14.57
09/12/2014 22:22	19.9	38.49	5.33	14.57
09/12/2014 22:24	19.88	38.52	5.33	14.55
09/12/2014 22:26	19.86	38.52	5.31	14.55
09/12/2014 22:28	19.82	38.51	5.27	14.55
09/12/2014 22:30	19.79	38.54	5.26	14.53
09/12/2014 22:32	19.78	38.54	5.25	14.53
09/12/2014 22:34	19.75	38.54	5.22	14.53

3.1.2.5 Graph Print

Directly print the graph with **[Print chart]**.

Generate a picture for each format proposed.



3.2 Log

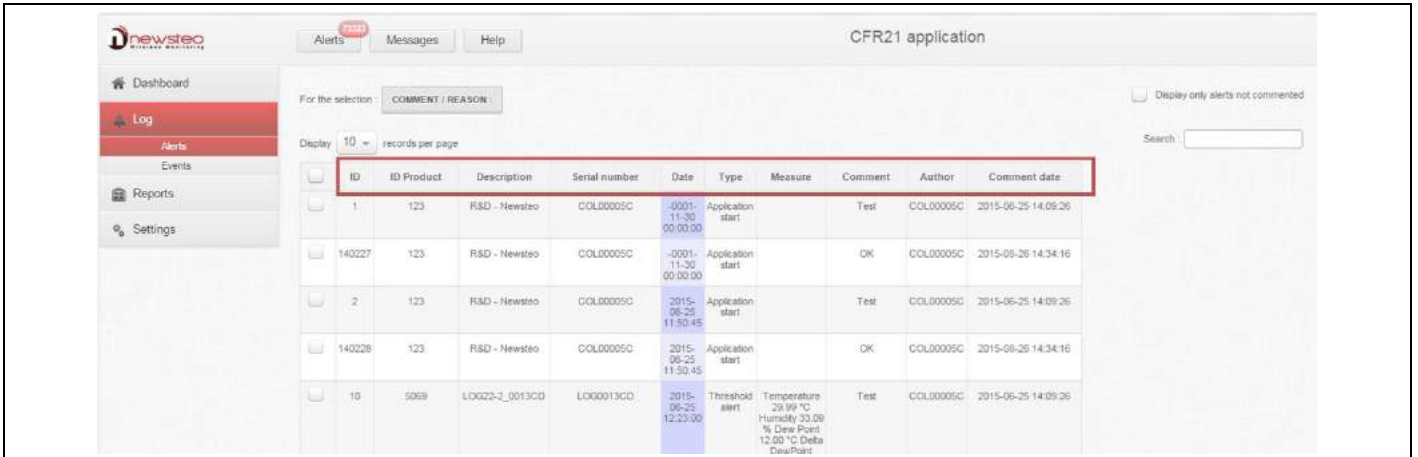
3.2.1 Alerts

Click on [Log].

Click on [Alerts] to get the alerts list.



3.2.1.1 Alert-Default display



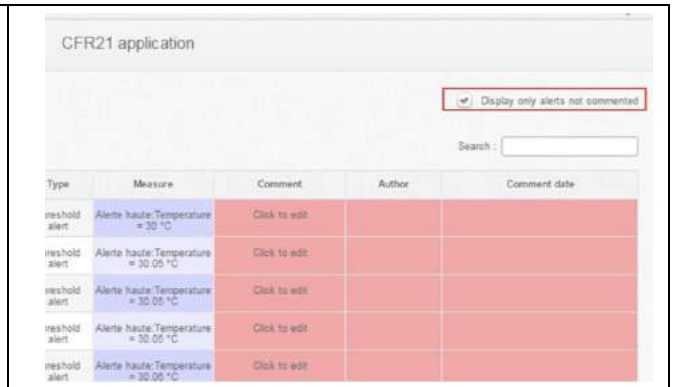
- **ID:**
Number which identifies the alert.
- **ID Product:**
A number that you can modify to easily identify your device.
(see [3.4.1.6.1.1 Configuration of loggers – Identification](#))
- **Description:**
A description that you can modify to easily identify your device.
(see [3.4.1.6.1.1 Configuration of loggers – Identification](#))
- **Serial Number:**
Single device identifier. This serial number corresponds to the one printed on the product label.
- **Date:**
Date and time of the alert.
- **Type :**
This icon shows if an alarm is detected on the corresponding product. If the icon is black, it means there is:
 - **Threshold alert:** if the measurement is outside the set thresholds.
 - **Lost transmission:** The COL cannot communicate with the device anymore.
 - **Lost transmission end:** The logger is detected again.
 - **Low battery:** the battery level is low. The user must change the battery if the level is under 30%.
- **Measure:**
Complementary information concerning the alert. Value of the measurement for a threshold alert.
- **Comment:**
Comment on the alert.
- **Author:**
Identifier of the user who made the comment.
- **Comment date:**
Date and time of the comment on the alert.

3.2.1.2 Comment on alerts

3.2.1.2.1 Alert - Filter on comment

Select the option **[Display only alerts not commented]**.

It displays only the alerts which have not been commented, including the last alerts.



3.2.1.2.2 Alert -Comment alerts

Comment an alert by writing directly on its text zone.

Click on **[Save]**.

The identifier of the user who made the comment and the date and time of the comment are automatically updated.

If the comment is modified by user, its identifier appears in the author column and the **date and time** of the last comment appears in the **Comment date** column.

In this case, an event is created in the event list to save the modification and the modification date.

(see **3.2.2 Events**)



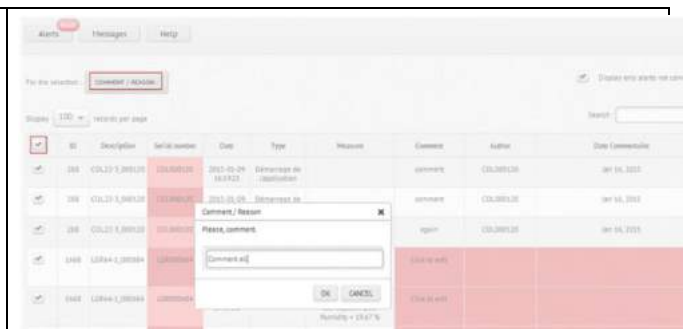
Comment several alerts at the same time by checking off their lines

or

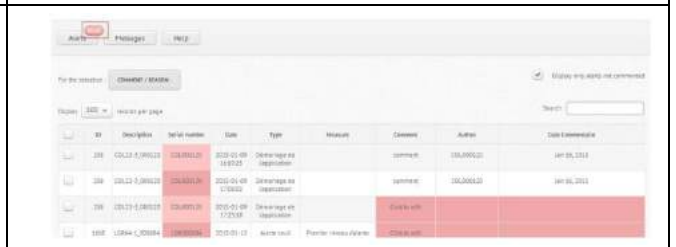
Comment all alerts at the same time by checking off the selection column.

Click on **[Comment/Reasons]**.

Click on **[OK]** to save the comment.

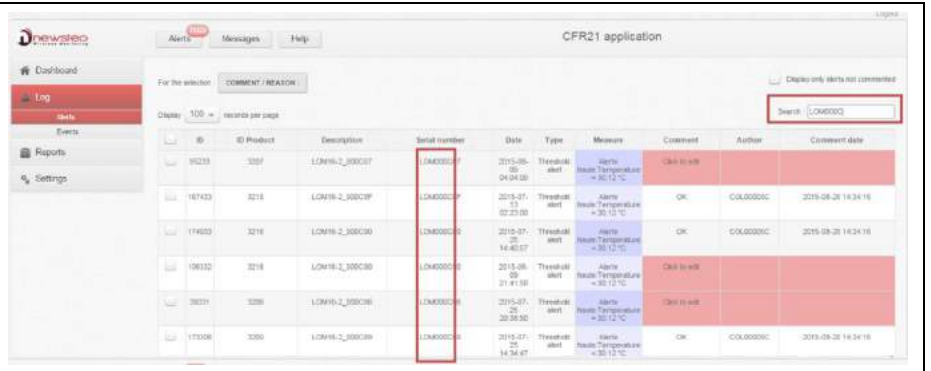


When you comment an alert, the total number of alerts indicated at the top of the page decreases.



3.2.1.3 Alert -Make a search

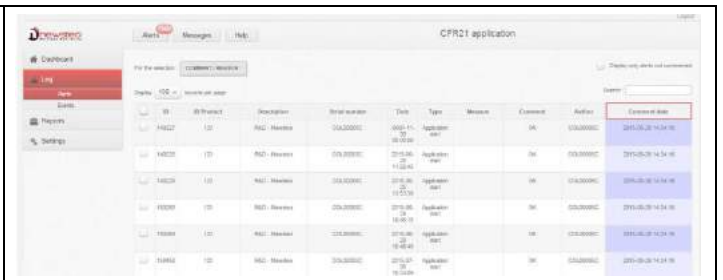
Enter the character corresponding to your search.



3.2.1.4 Alert -Sort the lines

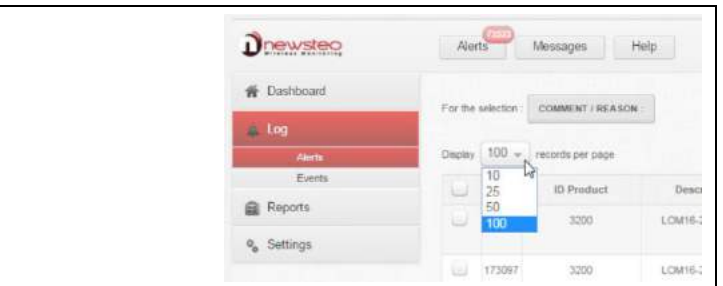
It is possible to rank the instrument panel in decreasing or ascending alphabetic order of each column except for "Alerts" column.

For example:
Click on **[Comment Date]**.



3.2.1.5 Alert -Limit the number of records per page

See (3.1.1.5 Last Measurement - Limit the number of records per page).



3.2.1.6 Alert -Navigate in different pages

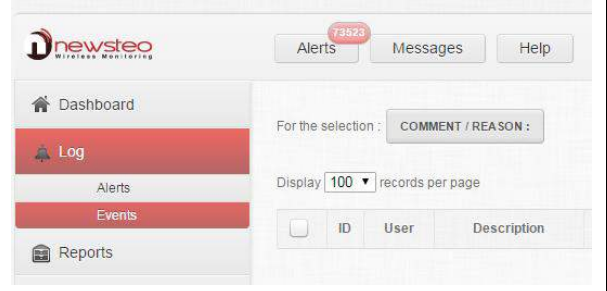
See (3.1.1.6 Last Measurement - Navigate in different pages).



3.2.2 Events

Click on [Log].

Click on [Events] to get the Events list.



3.2.2.1 Events – Default Display

ID	User	Description	Serial number	Date	Type	Message	Comment	Author	Comment date
3	COL3000C			2015-04-28 11:52:51	Application stop	Verbservice			
4	COL3000C			2015-04-28 11:52:53	Application start	Verbservice			
5	COL3000C	RAC - Newsteo	COL3000C	2015-04-28 13:52:58	Device command executed	RF			
6	COL3000C	RAC - Newsteo	COL3000C	2015-04-28 13:53:18	Device command executed	Preparam			
7	COL3000C	RAC - Newsteo	COL3000C	2015-04-28 13:53:58	Device command executed	Collecteur			
8	COL3000C	RAC - Newsteo	COL3000C	2015-04-28 14:29:27	Device command executed	Appl d'un commentaire pour Table Type COL3000C - Tref			
17	COL3000C	RAC - Newsteo	COL3000C	2015-04-28 14:29:27	Device command executed	Appl d'un commentaire pour Table Type COL3000C - Tref			
18	COL3000C	RAC - Newsteo	COL3000C	2015-04-28 14:29:27	Device command executed	Appl d'un commentaire pour Table Type COL3000C - Tref			
19	COL3000C	L0416.5_000008	L0400008	2015-04-28 14:29:27	Device command executed	Appl d'un commentaire pour Table Type COL3000C - Tref			
20	COL3000C	L0002_2_001N03	L0002-003	2015-04-28 14:29:27	Device command executed	Appl d'un commentaire pour Table Type COL3000C - Tref			

- **ID:**
Number which identifies the event.
- **User:**
Identifier of the user which was connected while this event.
- **Description:**
Description of the logger concerned by the event.
A description that you can modify to easily identify your device (see **Erreur ! Source du renvoi introuvable. Erreur ! Source du renvoi introuvable.**).
- **Serial Number:**
Serial number of the logger concerned by the event.
Single device identifier. This serial number corresponds to the one printed on the label of the product.
- **Date:**
Date and time of the event.
- **Type :** Alert type
 - Application start
 - Application stop
 - Device command executed: when the command is successfully ended
 - User Action: for the addition of a comment in a table
- **Information:**
Complementary information concerning Events.
- **Comment:**
Comment on Event.
- **Author:**
Identifier of the user who made the comment.
- **Comment date:**
Date and time of the comment on alert.

3.2.2.2 Comment events

3.2.2.2.1 Events - Filter on comment

Select **[Display only events without comments]** option.
It displays only events which have not been commented, including last events.



3.2.2.2.2 Events -Comment an event

This works exactly as for Alerts (see **0 Comment on alerts**).

3.2.2.3 Events - Make a search

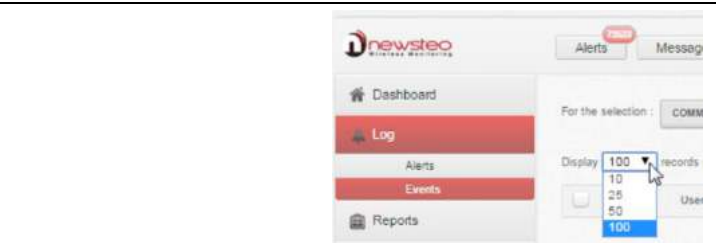
Enter characters corresponding to your search.
This works exactly as for Alerts (see **3.2.1.3 Alert -Make a search**).

3.2.2.4 Events - Sort the lines

It is possible to rank the instrument panel in decreasing or ascending alphabetic order of each column.
This works exactly as for Alerts (see **3.2.1.4 Alert -Sort the lines**).

3.2.2.5 Events - Limit the number of records per page

See **(3.1.1.5 Last Measurement - Limit the number of records per page)**.



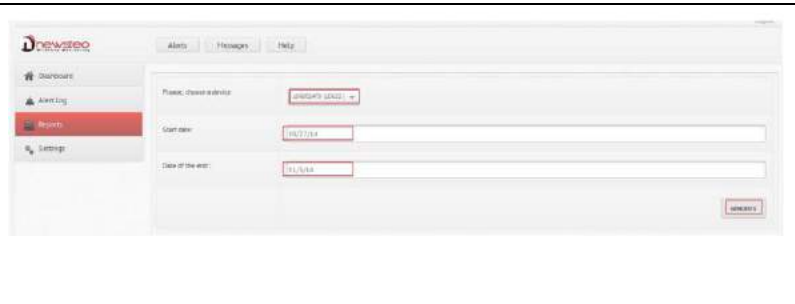
3.2.2.6 Navigate in different pages

See **(3.1.1.6 Last Measurement - Navigate in different pages)**.



3.3 Reports

Click on **[Reports]** to manually create a report.
Select a logger.
Choose a start date and an end date.
Click on **[Generate]**.
Right click on the report then print it in PDF format.



3.4 Settings

Click on [**Settings**] to configure Webmonitor and devices.

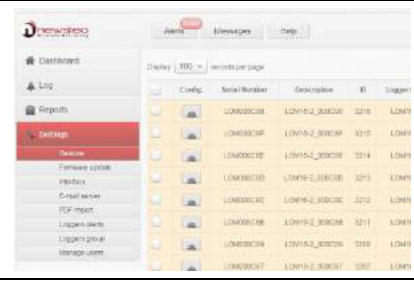


3.4.1 Devices

Click on [**Devices**] to get the list of devices.

Once loggers have been once detected, they will remain in this list.

To mask some of them, create some groups of loggers (see **3.4.7 Loggers group**).



3.4.1.1 Devices - Default display

Config	Serial Number	Description	ID	Logger type	RF settings	Product's commands	Firmware	Measurements
<input type="checkbox"/>	COL0005C	R&D - Newsteo	123	COL22-3	Channel 7	No awaiting commands	6.0.62	0 measure(s) in buffer
<input type="checkbox"/>	LGG0000C	Tribunal bx	12	LGG43-1	Channel 7	No awaiting commands	3.37.124	0 measure(s) in buffer
<input type="checkbox"/>	LGR00063F	LGR32-7_00063F	1599	LGR32-7	Channel 7	No awaiting commands	3.36.180	0 measure(s) in buffer
<input type="checkbox"/>	LGR0010A4	TEST CARBOGLACE	4260	LGR33-4	Channel 7	No awaiting commands	3.38.13	0 measure(s) in buffer
<input type="checkbox"/>	LOG0013CD	LOG22-2_0013CD	5069	LOG22-2	Channel 7	No awaiting commands	2.3.6	0 measure(s) in buffer
<input type="checkbox"/>	LOG0014FD	LOG22-2_0014FD	5373	LOG22-2	Channel 7	No awaiting commands	2.3.6	0 measure(s) in buffer
<input type="checkbox"/>	LOG00171C	LOG36-3_00171C	42	LOG36-3	Channel 7	No awaiting commands	2.3.61	0 measure(s) in buffer
<input type="checkbox"/>	LOM0007F0	LOM16-2_0007F0	2032	LOM16-2	Channel 7	No awaiting commands	2.0.10	0 measure(s) in buffer

- **ID:**
Number which identifies the event.
- **Config:** Buttons to open the configuration menu
- **Serial Number:**
Single device identifier. This serial number corresponds to the one printed on the product label.
- **Description:**
A description that you can modify to easily identify your device.
(see **3.4.1.6.1.1 Configuration of loggers – Identification**).
- **ID:**
A number that you can modify to easily identify your device.
(see **3.4.1.6.1.1 Configuration of loggers – Identification**)
- **Logger type:**
It indicates the product reference in the NEWSTEO products range.
- **RF settings:**
The Radio Frequency channel on which the product is communicating. To be able to communicate with a product, both Product and COL have to be on the same channel.

- Product commands:**
No awaiting command: If all the commands have been sent to the device.
1 command(s) in the queue: X corresponds to the number of commands. You get this information if you make a modification in the logger configuration or if you send a command (ex: hibernate command). Once the command correctly sent to the device, you get "No awaiting commands" again.
REMARK: Each time you send a command to the logger, you must wait for a radio transmission or press ACK button on the COL.
- Firmware:**
 Current firmware version. To upgrade the firmware, see **0** Firmware.
- Measurements:**
 Number of measures stored in the logger and not yet transmitted to the database.
 In case of transmission loss between Logger and COL, the logger continues to take measures. As soon as communication is restored, the number of measures stored in the logger is indicated and starts decreasing while the measures are sent to RF Monitor.

Config.	Serial Number	Description	ID	Logger type	RF settings	Product's commands	Firmware	Measurements
	COL0005C	R&D - Newsteo	123	COL22-3	Channel 7	No awaiting commands	6.0.62	0 measure(s) in buffer
	LGG0000C	Tribunal bx	12	LGG43-1	Channel 7	No awaiting commands	3.37.124	0 measure(s) in buffer
	LGR00063F	LGR32-7_0063F	1599	LGR32-7	Channel 7	1 command(s) in the queue	3.36.160	0 measure(s) in buffer
	LQR001044	TEST CARBOGLACE	4269	LQR33-4	Channel 7	No awaiting commands	3.38.13	0 measure(s) in buffer
	LOG0013CD	LOG22-2_0013CD	5069	LOG22-2	Channel 7	No awaiting commands	2.3.6	0 measure(s) in buffer
	LOG0014FD	LOG22-2_0014FD	5373	LOG22-2	Channel 7	No awaiting commands	2.3.6	0 measure(s) in buffer
	LOG00171C	LOG36-3_00171C	42	LOG36-3	Channel 7	1 command(s) in the queue	2.3.61	0 measure(s) in buffer
	LOM0007F0	LOM16-2_0007F0	2032	LOM16-2	Channel 7	No awaiting commands	2.0.10	0 measure(s) in buffer
	LOM000854	LOM18-2_000854	2132	LOM18-2	Channel 7	No awaiting commands	2.0.10	0 measure(s) in buffer
	LOM000C55	LOM16-2_000C55	3157	LOM16-2	Channel 7	No awaiting commands	2.4.1	0 measure(s) in buffer

There are 4 possible colors for the lines in this table:

Grey/White:

Alternatively white or grey to simplify the read of the table.
 It means that it works properly and that there is no action in progress.

Orange:

(or yellow – it depends on the display on the computer screen)
 For Logger, it means there is no communication between Logger and COL: logger ↔ COL
 For COL, it means there is no communication between COL and Server: COL ↔ server

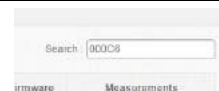
Red:

It means a command (for example a modification of configuration) has been sent by the server to the COL, and this command has not been sent to the logger yet.

See **3.4.1.11 Example of a Command transmission**

3.4.1.2 Devices - Make a search

Enter the characters corresponding to your search.
 See **(3.1.1.3 Last Measurement - Make a search)**



3.4.1.3 Devices - Sort the lines

It is possible to rank the instrument panel in decreasing or ascending alphabetic order of each column except for "Config" column.

See **3.1.1.4 Last Measurement - Sort the lines**

3.4.1.4 Devices - Limit the number of records per page

See (3.1.1.5 Last Measurement - Limit the number of records per page).




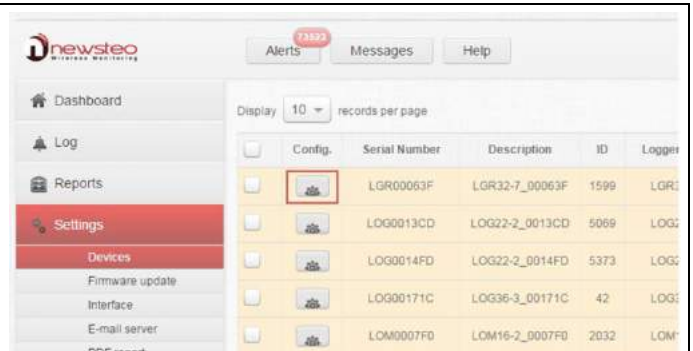
3.4.1.5 Devices - Navigate in different pages

See (3.1.1.6 Last Measurement - Navigate in different pages).



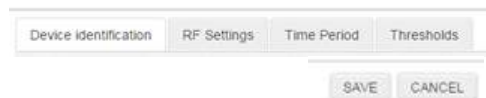
3.4.1.6 Configuration

Click on  to open the device configuration window.



For each of the following tabs (Device identification, RF settings...), if you change configuration, click on **[Save]** to validate modifications.

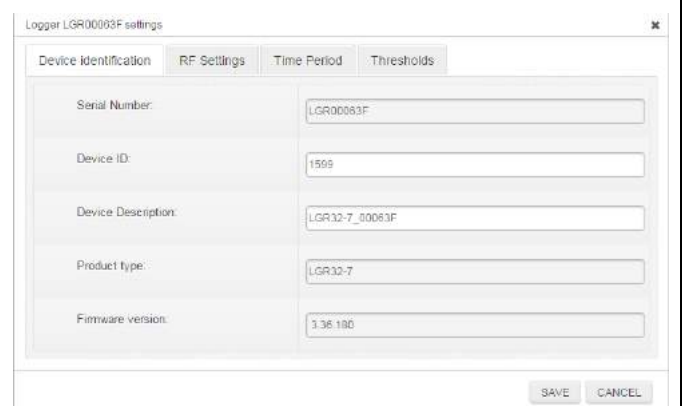
Wait for radio transmission or press ACK button on the COL so the modification can be taken into account by the logger.



3.4.1.6.1 Configuration of loggers – Identification, RF Settings, Time Period, Threshold

3.4.1.6.1.1 Configuration of loggers – Identification

Select the tab **[Device Identification]**.



You get information concerning your logger and you can only modify:

Device ID (identification): number from 0 to 999

Device Description: 16 characters

[SAVE]: to validate modifications.

3.4.1.6.1.2 Configuration of loggers – RF Settings

Select the tab **[RF Settings]**

RF Channel

Localization:

Set Europe or 915 MHz (for North America) localization to respect local normalization of ISM frequencies.

Boot Channel:

Channel of starting for loggers is channel 1 by default. This parameter cannot be modified.

Working Channel:

When starting, working channel of the Logger is channel 1.

12 working channels can be used.

We recommend to change the working channel to avoid measures loss.

CAUTION: Once the logger working channel has been modified, you must change the COL working channel (COL and logger must always be on the same channel to communicate; COL must take the channel of the logger)

Power consumption

Output power :

Power of emission – Default value is « 10dBm 30 mA ». We recommend you not to change this parameter for a best radio transmission.

Sensitivity:

Sensitivity for reception - Default value is « High » We recommend you not to change this parameter for a best radio transmission.

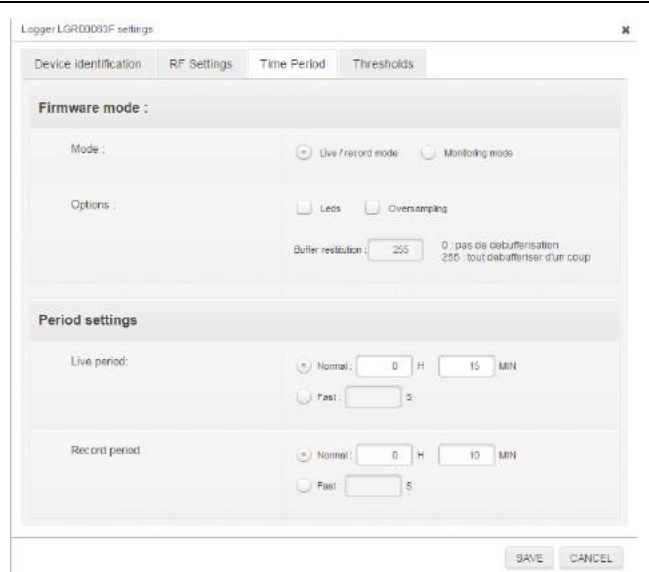
Channel securization :

This option enables to securize the working channel of your logger to avoid measures loss.

[Send]: to validate modifications.

3.4.1.6.1.3 Configuration of loggers – Time Period

Select the tab [Time & Period].



Firmware Mode :

Mode :

- **Live/record mode**

It is dedicated to campaigns of measures, mainly for TRE, TRK and TRP products. User must manually send a command to start the campaign of measures and another one to stop it. Then, he needs to download measures by sending a download command in order to fill the database and to generate reports (.pdf and .csv file).

COL is designed to operate in Monitoring mode. If a logger is in Live/record mode, change it into Monitoring mode.

- **Monitoring mode**

In this mode, Logger automatically sends its measurements to the database. If a measure is not received by the computer, Logger stores it in its internal memory and sends it to the database during the next transmission.

REMARK: To have more information concerning those two functioning modes, please (see **4 ANNEX – General description of the running mode of loggers**)

Options :

- **Leds**

You can choose to activate or not the LEDs. If they are activated, logger energy consumption slightly increases.

LEDs are only available on some loggers (LOG, LOM and LOP).

LED lights up green if the measures taken by the Logger are inside set thresholds.

LED lights up red if the measures taken by the Logger are outside set thresholds.

- **Oversampling**

When this mode is activated, logger takes more measures

CAUTION: This option significantly increases the logger energy consumption.

- If the measurement period is upper than 1minute (ex.: 10 minutes), Logger will take a measure every minute. If a threshold alert is overtaken, measures will be stored in the database every minute. If thresholds aren't overtaken, only periodic measures will be stored in the database.
- If the defined period is lower than 1 minute (ex.:20 seconds), Logger will have the same behaviour as above but it will take a measure every second instead of every minute.

- **Buffer Restitution: (monitoring mode only)**

When the product is in monitoring mode and is not able to transmit its measurements to the PC, it automatically stores them. At the next connection with computer, Logger will transmit all recorded measures.

Buffer restitution value allows to define the number of stored data sent at each transmission. By default, it is defined to 255. This value means that the Logger will send in one time all the stored measures (up to 32256 measurements) as soon as there will be a communication between Logger and RF-to-USB key.

It can be necessary to modify this parameter if many loggers are used in the same site and if there are risks of radio collision. The user can set it for example on 9. The device will send 9 by 9 the stored measures in addition to the current measures, at each transmission to the PC (every 10 minutes if the measure frequency is set on 10 minutes). It will be longer to download all the data but it will avoid radio collision between several products.

Period settings :

Measure Period – For Monitoring Mode :

Time between two measures.

By default, a measure is transmitted every 10s to RF-Monitor from the Logger with a request for acknowledgment.

You can define a period up to 4 hours.

Measure Period – For Live / Record Mode :

Measurement period between two campaigns of measures.

By default in 'live' mode, a measure is transmitted every 10s from Logger to RF-Monitor which allows the user to set alert thresholds and verify the operation of the Logger.

Record Period – For Live / Record Mode :

Measurement period for the recording campaign.

By default, in 'record' mode, the logger takes a measure every 10 minutes and stores it in its memory. These measures will be restituted to RF Monitor on request and after a change for the 'live' mode by a "stop record command".

Reminder : COL is designed to operate in Monitoring mode. If a logger is in Live/record mode, change it into Monitoring mode.

REMARK: The higher the frequency is for the measurement, the faster the memory will be full.

For information:	period 1 mn	→ 20 days	of autonomy
	period 10 mn	→ 200 days	of autonomy
	period 30 mn	→ 2 years	of autonomy

[Send]: to validate modifications.

3.4.1.6.1.4 Configuration of loggers – Thresholds

Select the tab [Thresholds].

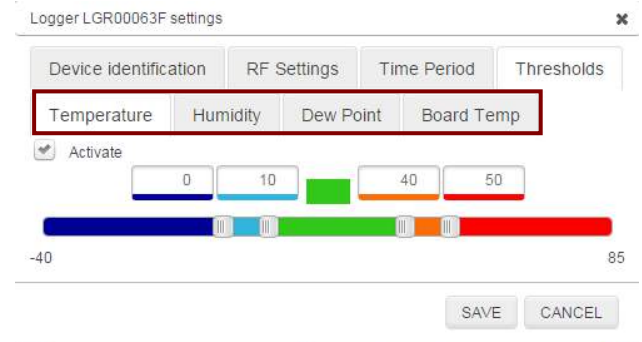
It can have several tabs available.

It depends on the logger.

It corresponds to the sensors 1, 2 ... displayed on the logger line in the main interface (Example : Temperature, Humidity, ...)

Activate :

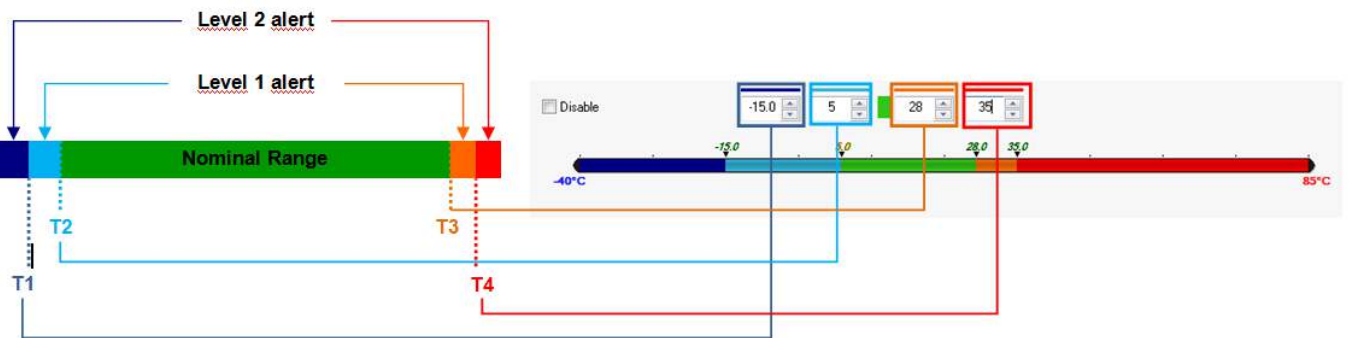
Select this option in order to configure thresholds for alerts.



You can define low and high levels thresholds alarms for each sensor (here, temperature sensor).

There are several levels for alerts :

The **nominal area is green**, light blue, dark blue, orange and red corresponding to the alert areas.



[SAVE]: to validate modifications.

3.4.1.6.2 Configuration of COL – Identification, RF Settings, COL settings

3.4.1.6.2.1 Configuration of COL – Identification

Select the tab [Device Identification].

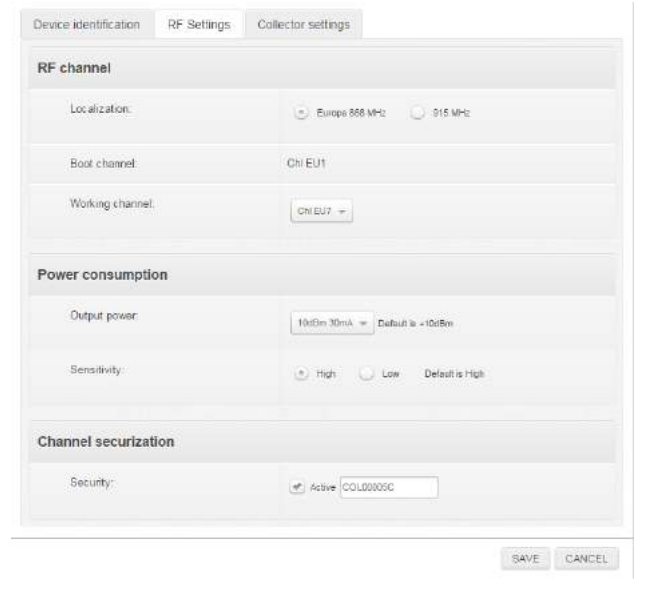
See [3.4.1.6.1.1 Configuration of loggers – Identification](#)



3.4.1.6.2.2 Configuration of COL - RF Settings

Select the tab [RF Settings]

See 3.4.1.6.1.2 Configuration of loggers – RF Settings



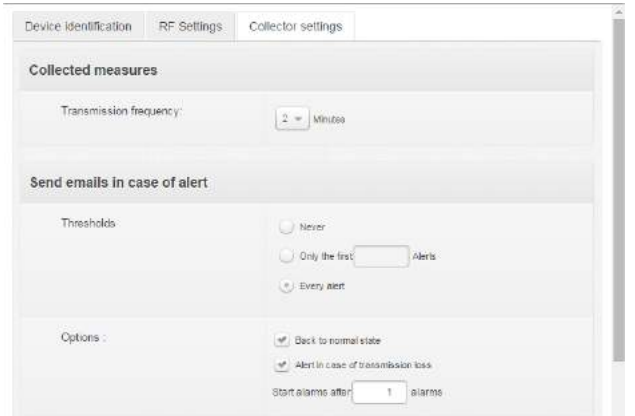
3.4.1.6.2.1 Configuration of COL – Collector Settings

Select the tab [Collector Settings] to configure the emails alerts, the server, the database and the network.

Collected Measures :

Transmission frequency

It defines the time between two communication between COL and server.



Send emails in case of alert :

Thresholds

- **Never**

Select this option if you don't want to receive emails for alerts on thresholds.

- **Only the first n alerts**

Select this option to limit the number of emails for each alert on thresholds. Define the number of emails you want to receive.

- **Every alert**

Select this option to receive emails for all the alerts on thresholds.

Options

- **Back to normal state**

Select this option to receive an email on the end of alert.

- **Alert in case of transmission loss**

Select this option to receive an email when there is no more communication between a logger and the COL.

- **Start alarm after n alarms**

1 by default. It means Webmonitor will consider there is a problem as soon as there is a threshold crossing.

EXAMPLE: For a period of measure of 15 mn, If there is a transmission loss after 3 periods without measure, and if there is a trigger on alarms after 2 consecutive errors, the alert on the transmission loss will occur after 1h15mn.

Server configuration :

Address

www.newsteo-webmonitor.com if your database is located on NEWSTEO server.
IP address of your server if you have installed your own database.

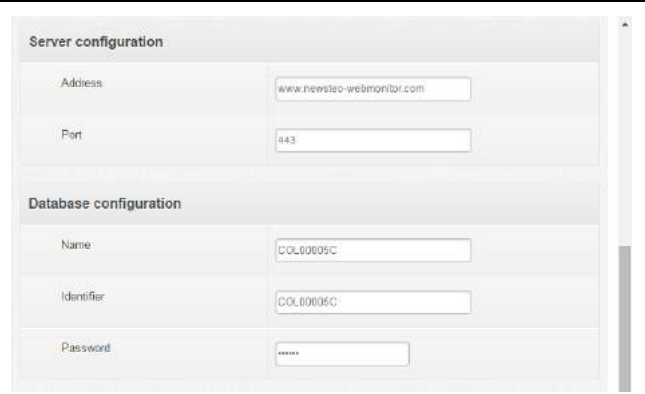
Port

443: if your database is located on the NEWSTEO server.

Contact your network administrator to configure those parameters if you have installed your own database.

Database configuration :

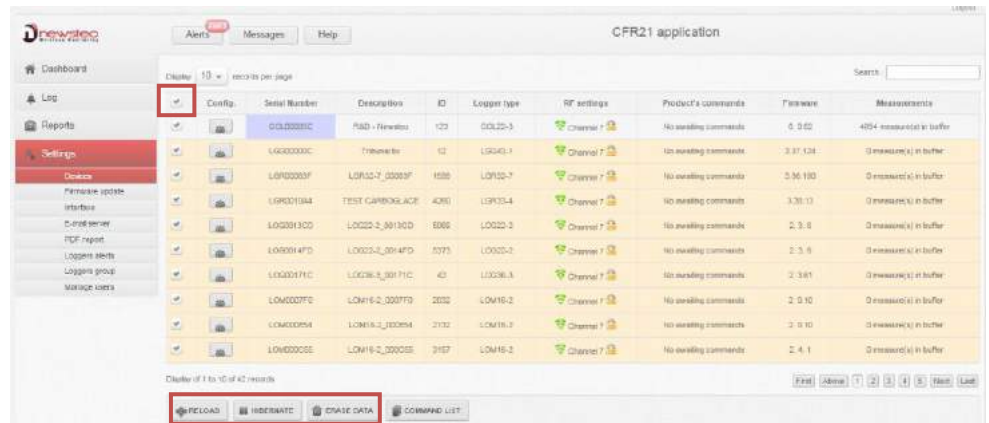
Use information on the back of your COL.
The identifier is the login (see **0 Start** Webmonitor).



Contact your network administrator to fill those parameters.



3.4.1.7 Command



For each command :
Select several devices at the same time by checking off their lines
or
Select all devices at the same time by checking off the selection column.

Click on the button which corresponds to the command you want to send.

3.4.1.7.1 Command - Reload

Click on **[Reload]**.

To reload information concerning loggers.

It enables to be sure that the information displayed have not changed.

They could have changed if the logger had been used with another computer. In this case, information displayed could not correspond exactly to the current status of the logger but to the one saved in during last use.

3.4.1.8 Command - Hibernate

Click on **[Hibernate]** to stop your logger.

This function enables to save battery when you do not use your logger.

You can restart you logger by passing the magnet on it.

(see **2.3 Start a device**)

3.4.1.9 Command - Erase data

Select **[Erase Data]** option to erase measurements stored in the logger.

This function enables to erase measurements stored in the logger after a communication interrupt.

For example: After a loss of transmission during a long time, you have a lot of measurements which have been automatically recorded in the logger memory (See **Monitoring Mode in Erreur ! Source du renvoi introuvable.4** REF_Ref431537758 \h * MERGEFORMAT ANNEX – General description of the running mode of loggers). When the communication is restored again, the measurements are automatically transmitted to the database in their time. If you don't want to get them and if you don't want them to be stored in the Database, use the command **[Erase data]**.

3.4.1.10 Command list

The screenshot shows the Newsteo interface for the CFR21 application. The main table displays a list of loggers with the following columns: Config, Serial Number, Description, ID, Logger type, RF settings, Product's commands, Firmware, and Measurements. A 'COMMAND LIST' button is highlighted at the bottom of the interface. The 'Command List' dialog box is open, showing a table with the following columns: Logger, Modifications Gateway, Status, and Date. A 'DELETE' button is highlighted in the dialog box.

Config	Serial Number	Description	ID	Logger type	RF settings	Product's commands	Firmware	Measurements
	CCL00005C	R&D - Newsteo	123	CCL22-3	Channel 7	No awaiting commands	6.0.02	0 measure(s) in buffer
	LOG00000C	Tribunal br	12	LOG43-1	Channel 7	No awaiting commands	3.37.124	0 measure(s) in buffer
	LGR00063F	LOR32-7_00063F	1596	LOR32-7	Channel 7	1 command(s) in the queue	3.36.180	0 measure(s) in buffer
	LOR001044	TEST CARBOGLACE	4280	LOR33-4	Channel 7	No awaiting commands	3.38.13	0 measure(s) in buffer
	LOG0013CD	LOG22-2_0013CD	5069	LOG22-2	Channel 7			
	LOG0014FD	LOG22-2_0014FD	5373	LOG22-2	Channel 7			
	LOG00171C	LOG38-3_00171C	42	LOG38-3	Channel 7			
	LDM0007FD	LDM16-2_0007FD	2032	LDM16-2	Channel 7			
	LDM000854	LDM16-2_000854	2132	LDM16-2	Channel 7			
	LDM000C55	LDM16-2_000C55	3157	LDM16-2	Channel 7			

Logger	Modifications Gateway	Status	Date
LGR00063F	Identification	In progress	2015-08-25 11:45:21
LGR00063F	RF	Successfully finished after 1 attempt(s)	2015-08-18 17:05:25
LGR00063F	Threshold	Successfully finished after 1 attempt(s)	2015-08-16 17:36:26
LGR00063F	Threshold	Successfully finished after 1 attempt(s)	2015-08-16 15:54:18
LGR00063F	Threshold	Successfully finished after 1 attempt(s)	2015-08-05 16:22:48
LGR00063F	Threshold	Sent to the Collector	2015-08-09 15:49:16
LGR00063F	Frequency	Successfully finished after 1 attempt(s)	2015-05-08 10:23:10

There is a line per command.

- **Logger:** Serial number of the device which is concerned by the command.
- **Modifications:** Detail on the type of command.

- Threshold: Threshold Modification
- RF: Channel Modification
- Frequency: Period of measure
- ...
- **Status:** Status of command.
 - Finished with the number of attempts for the sending of command.
 - In progress: Command is taken in account by the server and it will be sent to COL at the next transmission.
 - Sent to COL: Command has been sent to COL and will be sent to logger at the next communication between logger and COL (depending on the Transmission Frequency of the logger. See **3.4.1.6.1.3 Configuration of loggers – Time Period**)

As long as the status of command is “In progress”, it is still possible to cancel it by selecting the line and by clicking on [DELETE]. In other cases, if you select the line and click on [DELETE] the line will be suppressed but the command will be sent to the logger.

3.4.1.11 Example of a Command transmission

Modify the device ID of the logger LGG00000C from 12 into 13.
Send this command (see **3.4.1.6.1.1 Configuration of loggers – Identification**).

Press [F5] to refresh the display

		LGG00000C	Tribunal bx	12	LGG43-1	Channel 7	1 command(s) in the queue	3.37.124	0 measure(s) in buffer
--	--	-----------	-------------	----	---------	-----------	---------------------------	----------	------------------------

The line of the logger is still white and there is one command in the queue.
It means that this command has not been sent to COL yet and can still be deleted (see **3.4.1.10 Command list**).

Regularly press [F5] to refresh the display.

		LGG00000C	Tribunal bx	12	LGG43-1	Channel 7	No awaiting commands	3.37.124	0 measure(s) in buffer
--	--	-----------	-------------	----	---------	-----------	----------------------	----------	------------------------

Logger line is red and there is no awaiting command.
It means that the command has been sent to COL and cannot be deleted anymore.
However, the command has not been sent by COL to logger yet.

Regularly press [F5] to refresh the display.

		LGG00000C	Tribunal bx	13	LGG43-1	Channel 7	No awaiting commands	3.37.124	0 measure(s) in buffer
--	--	-----------	-------------	----	---------	-----------	----------------------	----------	------------------------

Logger line is white again and there is no awaiting command.
It means that the command has been correctly transmitted to Logger.
Logger ID is now 13 instead of 12.

3.4.2 Firmware

Select [**Firmware update**].

This menu has to be used to update the device embedded software (firmware) when a new one has been released. If a new firmware is available for your logger in WebMonitor interface, it automatically appears.
REMARK: Generally speaking, it is advised not to upgrade logger firmware if your logger is working properly.

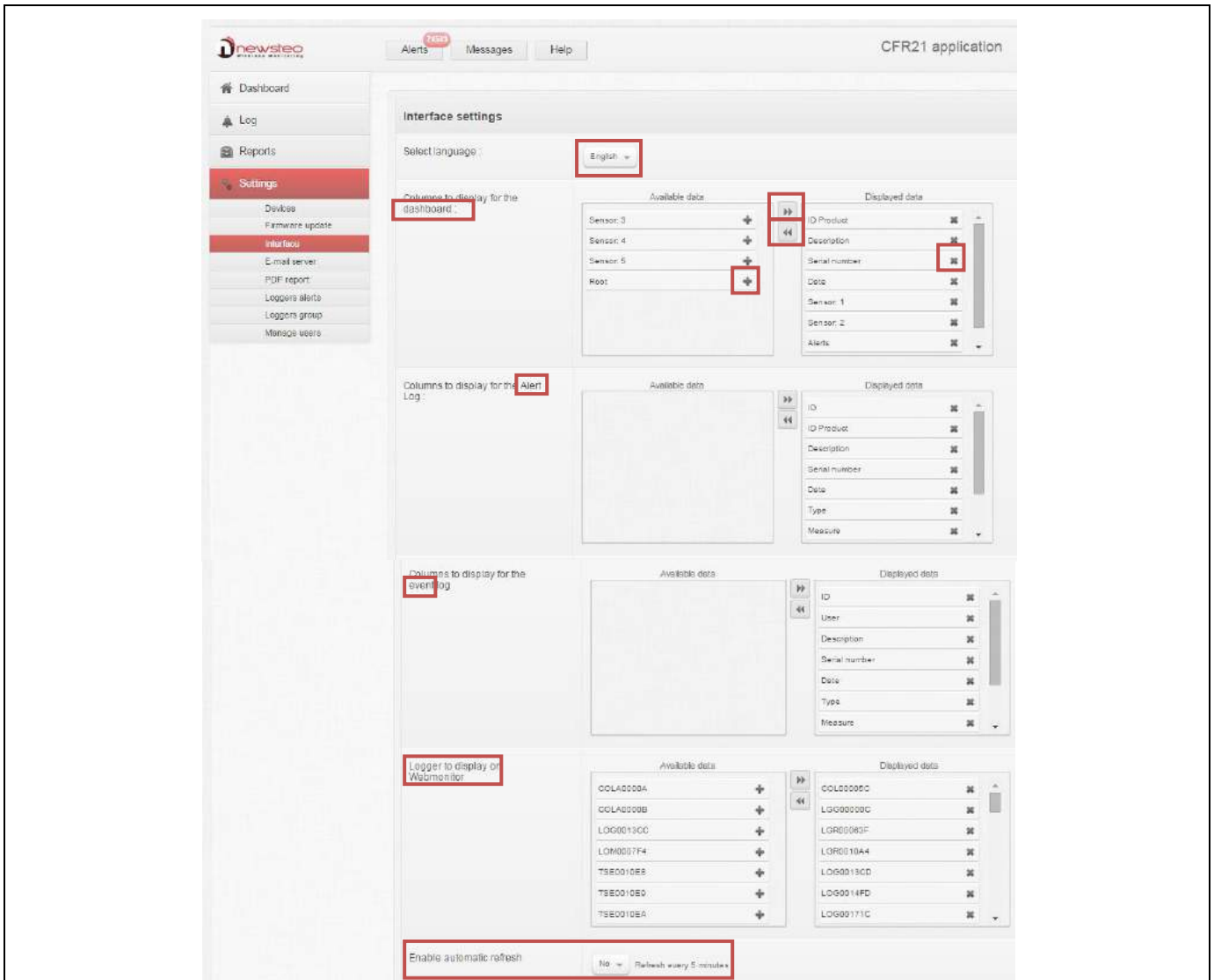
Click on [**CHOOSE A FIRMWARE**] to visualize and select a new firmware. You can get information concerning product type and firmware version.

Click on [**UPDATE DEVICE**].
Command is sent to the product.
Wait for a radio transmission or press ack button on the COL.



CAUTION: Do not remove device batteries while update is in progress.

3.4.3 Interface



Select **[Interface]**.

To change interface language.

To modify the number of columns in the different tables in order to simplify use and customize information visualization.

Click **✖** on the corresponding label to remove a column from the corresponding table.

Click **+** on the corresponding label to add a column to the corresponding table.

Click on **▶▶** to add all the column to the corresponding table.

Click on **◀◀** to remove all the column from the corresponding table.

You can select the column to display in the Dashboard (see **3.1.1.1 Last measurement-Default display**).

You can select the column to display in the list of Alerts (see **3.2.1.1 Alert-Default display**).

You can select the column to display in the list of Events (see **3.2.2.1 Events – Default Display**).

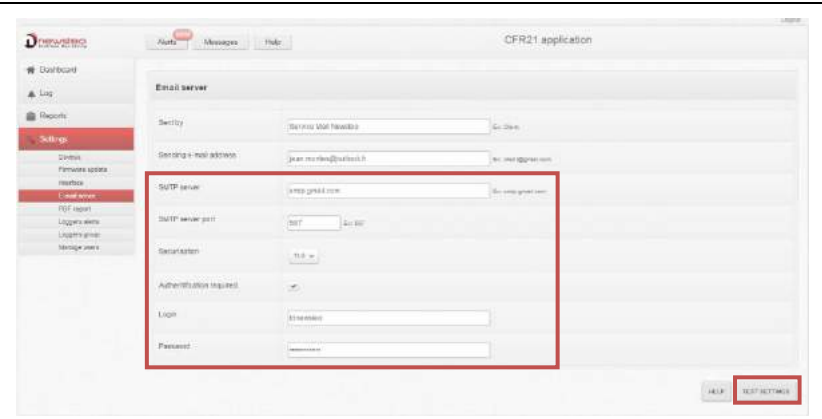
You can select the logger to display in WebMonitor. If you don't want to visualize a logger anymore in your interface, remove it from this list.

Click on **[yes]** to enable the automatic Refresh of WebMonitor interface. In general, press **[F5]** on your keyboard to refresh the screen and visualize the very last modifications.

3.4.4 E-mail server

Click on [E-mail server].

Those parameters must be completed to enable the sending of automatic reports (see [3.4.5 Pdf report](#)) and the sending of e-mail of alerts (see [3.4.6 Loggers alerts](#)).



Sent by: Information field concerning the sender (text).

Mail sender: Information field containing the sender's email.

Connection settings:

SMTP server, SMTP server port, Securization, Authentication required.

Contact your network administrator to configure those parameters.

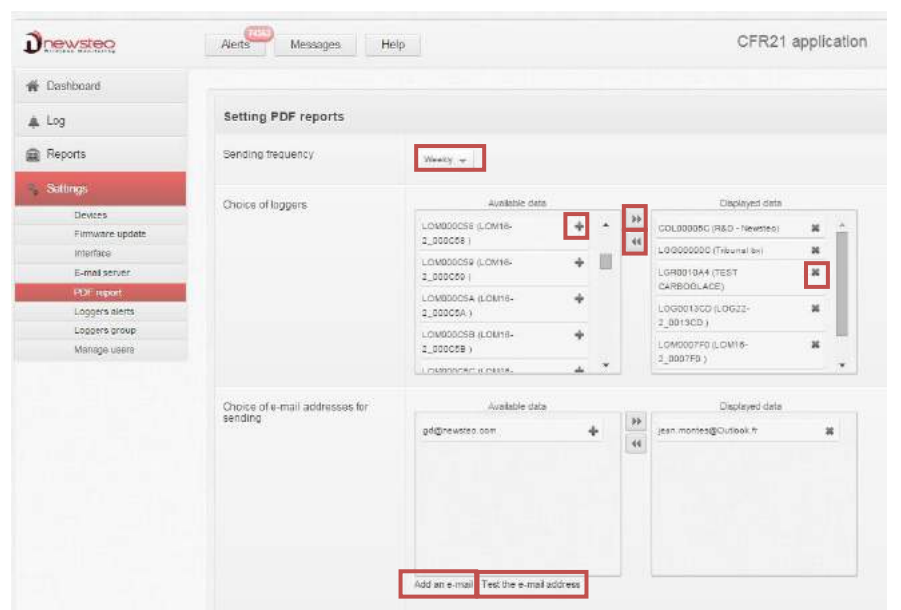
Click on [HELP] to get more information about the configuration SMTP server.

Click on [TEST SETTINGS] to test your configuration.

3.4.5 Pdf report

Click on [PDF report].

To run properly, the parameters of the SMTP server must be correctly configured (see [3.4.4 E-mail server](#)).



Sending frequency: It corresponds to the delay between two sendings of reports (Daily, Weekly, Monthly).

Choice of Logger: Select the serial numbers of the loggers for which you want automatic reports.

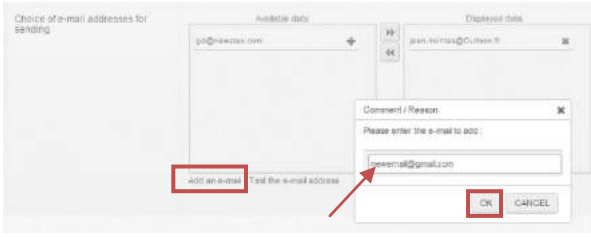
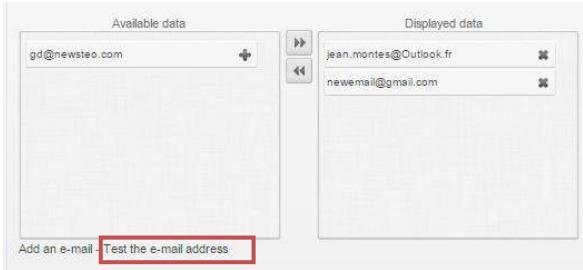
Click on the corresponding label to remove a logger.

Click on the corresponding label to add a logger.


Click on to add all the loggers (if you want a report for all the loggers).

Click on to remove all the loggers (if you don't want any report).

Choice of email addresses for sending: Email list of the persons who will receive the emails alert.

<p>Click on [Add an email]. Enter a new email address. Click on [OK].</p> <p>Remark: E-mail addresses recorded will also be available in the list of the possible email recipient for alerts (see 3.4.6 Loggers alerts).</p>	
<p>Click on [Test the e-mail address] and verify that you correctly receive the test e-mail.</p> <p>To suppress a recipient mail, Click ✖ on the corresponding address. The address will stay available in the Available data list for a further use. Click on + to add it again in the list of effective recipient.</p> <p>Remark: If you enter an invalid address, it will be indicated by Webmonitor. Press [F5] on your keyboard to refresh the page and remove the invalid address.</p>	

3.4.6 Loggers alerts

<p>Click on [Loggers alerts].</p> <p>To run properly, SMTP server parameters must be correctly configured (see 3.4.4 E-mail server).</p>	
<p>Choose the collector to set: For each COL available in this list (which corresponds to the number of COL in your installation) you will define the email recipients for the alerts. You can have different e-mail recipient from one COL to another.</p> <p>Collector setting: COLXXXXXX: Configure the e-mail recipients for alerts concerning the COLxxxxxx. This works exactly as for the e-mail recipient for automatic report (see 3.4.5 Pdf report).</p>	

3.4.7 Loggers group

Click on **[Loggers group]**.

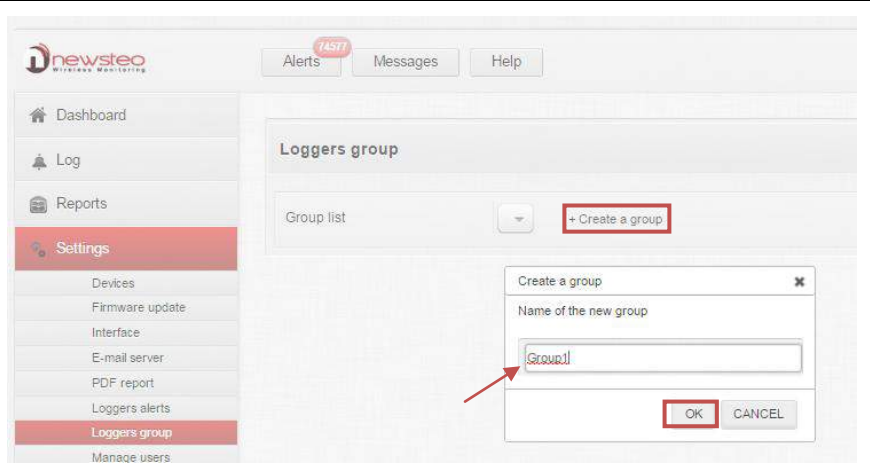
To create group of loggers in order to simplify the use of the Dashboard and to customize the visualization.

Click on **[+ Create a group]**.

Enter a name for the group.

Click on **[OK]**.

Remark : A logger can belong to several different groups.



Click on to get the list of groups.

Click on **[+ Create a group]**

To create a new group.



Once a Group is selected, you can:

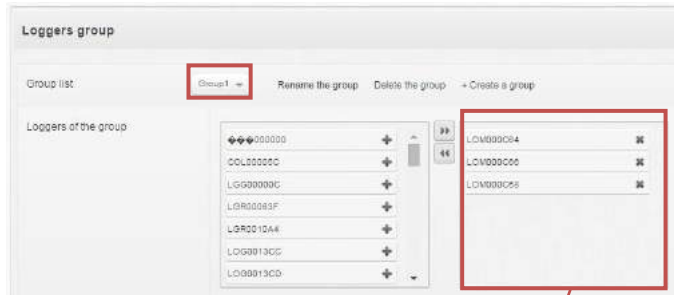
Click on **[Rename the group]** to modify its name.

Click on **[Delete the group]** to suppress it.

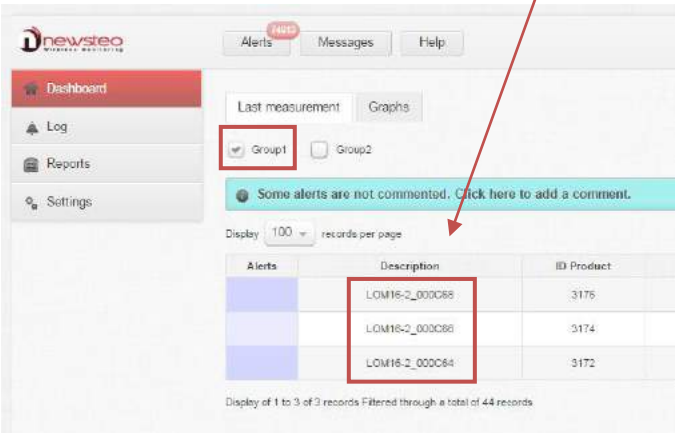
Click on **[+ Create a group]** to create a new group.

To add/suppress a logger in the group, it works exactly as for the choice of the logger for automatic report.

(see [3.4.5 Pdf report](#))



Once a group has been created , it corresponds to a new filter in the Dashboard (see [3.1 Dashboard](#)).



3.4.8 Manage users

Click on [Manage users].

To create groups of users and assign them some rights.

Webmonitor interface will be simplified so the user will be able to see only the authorized menu for him.



By default, you have only one user whom **identifier** is COLxxxxxx (corresponding to the serial number of the COL (indicated on the back of the COL).

Its **password** is also indicated on the back of the COL.

This user belongs to the group **administrators** which have all the rights on Webmonitor.

The Identifier, the Password and the Group of this user cannot be modified.

3.4.8.1 Users

<p>Click on [Users] To manage users.</p>	
<p>Click on [+ ADD A USER] to create a new user.</p> <p>Assign him an Identifier and a password.</p> <p>E-mail address and phone number are optional.</p> <p>Group : You must assign him a group but the Group must have been previously created (see 3.4.8.3 Groups permissions). If it is not the case, assign the group « administrators » first and modify it later.</p> <p>Click on [+SAVE] to save the modifications.</p>	
<p>Click on [MODIFY].</p>	
<p>Click on [DELETE] to suppress the corresponding user</p>	
<p> means that User is allowed to connect to Webmonitor.</p> <p>Click on [USER UNLOCKED] to lock a user so he will not be able to connect to Webmonitor anymore.</p> <p> means User is not allowed to connect to WebMonitor.</p> <p>Click on [USER LOCKED] to unlock a user.</p> <p>A user can have been locked after several attempts of connection with errors on identifier and/or password. (see 3.4.8.4 Other option)</p>	

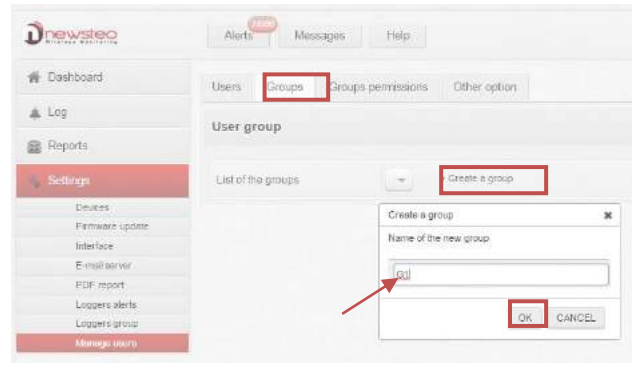
3.4.8.2 Group of users


Click on **[Groups]**.

To create a group of users.

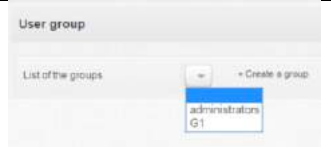
Click on **[+ Create a group]**.
Enter a name for the group.

Click on **[OK]**.



Click on  to get the list of groups.

Click on **[+ Create a group]**.
To create a new group.



Once a Group is selected, you can:


Click on **[Rename the group]** to modify its name.
Click on **[Delete the group]** to suppress it.
Click on **[+ Create a group]** to create a new group.

To add/suppress a user in the group, it works exactly as for the choice of the logger for automatic report. (see [3.4.5 Pdf report](#))

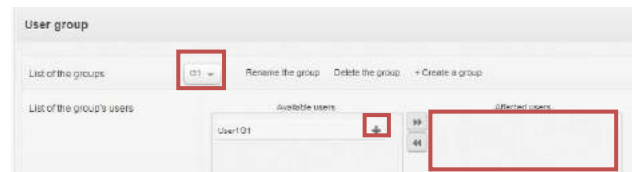
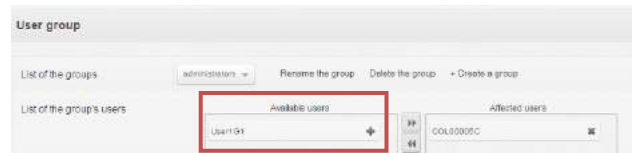


Example:


Select the group “administrators”
We previously created “User1G1” belonging to the “administrators” group and by default the user COLxxxxx is also in this group.

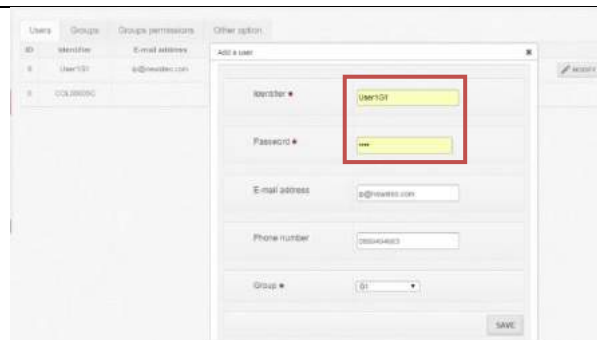
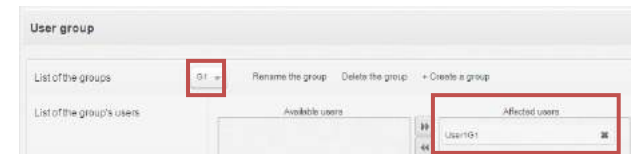
Click on  to remove “User1G1” from the group “administrator”.

“User1G1” is now on the list of “available users”.




Select the group “G1”; there is no user affected to this group.

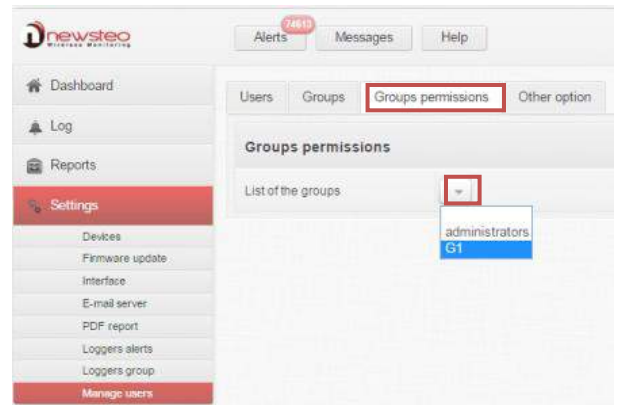
Click on  to add the “User1G1” to this group.



3.4.8.3 Groups permissions

Click on **[Groups permissions]** to assign the rights to a group.

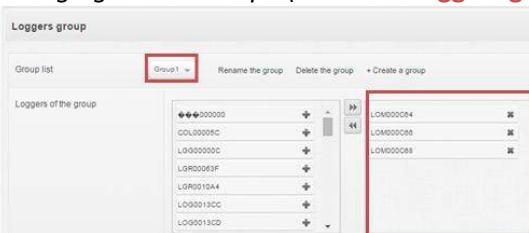
Click on  to get the groups list.
Select a group in the list.



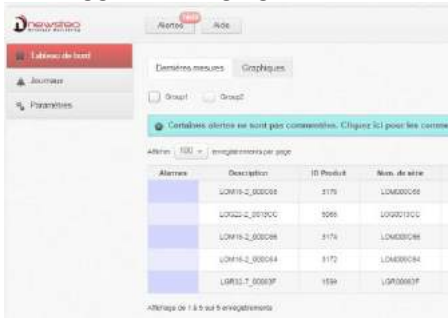
First select the loggers to display for this group.
Assign the rights for this group.

Logger displaying: It corresponds to loggers that G1 group users will be able to watch in their Webmonitor with their parameters of connection.

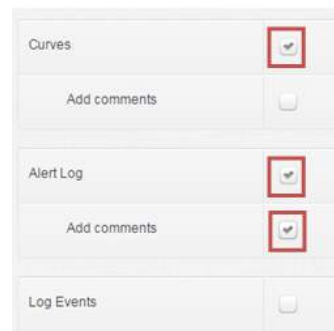
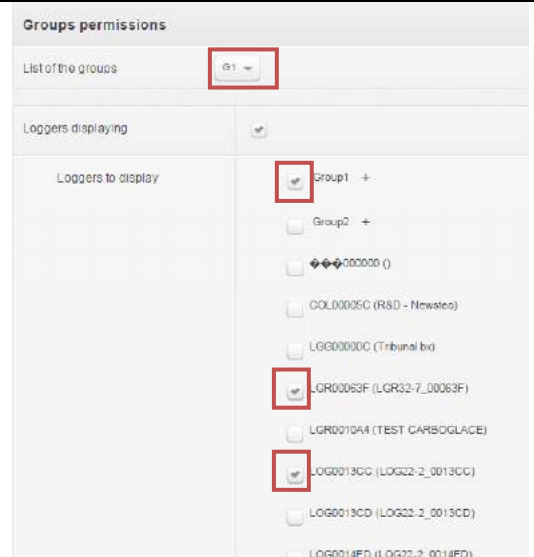
Example: For Group of users G1, enable the display of loggers belonging to the Group1 (see **3.4.7 Loggers group**).



And loggers belonging to the LGR00063F, the LOG0013CC etc.



The Group G1 has also the rights to visualize curves (but not to comment them) and to visualize and comment the alerts.



List of rights

Curves : To visualize Graph in the Dashboard.
Add comment : To comment the graph in the Dashboard.
(See **3.1.2 Graphs**).

Alert Log : To visualize alerts list.
Add comment : To comment alerts.
(See **3.2.1 Alerts**).

Log Events : To visualize alerts list.
Add comment : To comment Events.
(See **3.2.2 Events**)

PDF report: To manually generate reports.
 (See [3.3 Reports](#))

See Newsteo’s messages: To read the message from Newsteo.
 (See [2.4.2 Messages](#)).

Settings: To be able to reach all the menu below.
 (See [3.4 Settings](#)).

Devices: To be able to configure loggers and collectors.
 (See [3.4.1 Devices](#))

Device Description (See [3.4.1.6.1.1 Configuration of loggers – Identification](#))

RF Settings (See [3.4.1.6.1.2 Configuration of loggers – RF Settings](#))

Time,Period (See [3.4.1.6.1.3 Configuration of loggers – Time Period](#))

Thresholds (See [3.4.1.6.1.4 Configuration of loggers – Thresholds](#))

Collector settings (See [3.4.1.6.2.1 Configuration of COL – Collector Settings](#))

Hibernate a device (See [3.4.1.8 Command - Hibernate](#))

Erase data (See [3.4.1.9 Command - Erase data](#))

Firmware update: To update the device firmware (See [0 Firmware](#)).

Email server: To configure e-mails (See [3.4.4 E-mail server](#))

PDF report: To configure automatic reports (See [3.4.5 Pdf report](#))

Loggers alerts: To define loggers for which the emails of alerts will be sent (See [3.4.6 Loggers alerts](#))

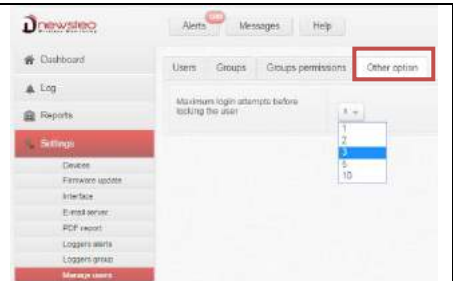
Loggers group: To create some groups of loggers (See [3.4.7 Loggers group](#))

User Manager: To modify rights of users (See [3.4.8 Manage users](#))

3.4.8.4 Other option

Click on [**Other option**].
 Select the number of accepted mistakes on connection parameters before locking a user.

To unlock a user, see [3.4.8.1 Users](#).



3.5 Logout

Click on [**Logout**] to disconnect the session of a user.



4 ANNEX – General description of the running mode of loggers

Logger is configured by default in **“Monitoring” mode**. It could be configured in **“Live/Record” mode** (see **3.4.1.6.1.3 Configuration of loggers – Time Period**) to be used with NEWSTEO software RF Monitor and RF-to-USB key receiver.

Measurements received by COL are sent to the server and are stored in the **database**. Whatever is the operating mode of the logger, stored measures will be **time/date stamped**.

Mode choice, with software RF Monitor, will depend on the application type but **for the use with Webmonitor, the only mode that must be used is “Monitoring Mode”**.

■ **Monitoring Mode:** This concerns the applications of real-time **Monitoring** with **control of measures**, where all the **measurement history must be preserved**. Thanks to an embedded memory in each logger, transmission of all data is guaranteed even in case of a transmission cut off. Monitoring Mode enables to **visualize measures and to trace alerts in real-time**.

Example of application: Supervision of temperature in a warehouse.

Operating principle:

- Logger takes measures in the configured period (10s default) and sends it to the PC (or to the COL), with acknowledgment of receipt.
- If there is no acknowledgment of receipt for the measure by the RF-to-USB key (or by the COL) (due to a communication problem...), the logger records the measurements in its memory buffer (up to 32000 measures). Once communication is restored, buffered measurements are automatically sent by the logger to the PC (or to the COL).
- With RF Monitor: RF Monitor displays measurements recorded in the database, and give alert if it is outside defined thresholds (audio, email, SMS, switching relay ...).
- With COL: COL sends data to the server and send alerts e-mails if necessary. Measurements can be visualized with Webmonitor.

■ **“Live/Record” Mode:** It is used for **measurement campaigns with consultation/treatment of data a-posteriori, without possibility of tracing real-time alerts**. “Live” mode allows you to check the logger operation and “Record” mode corresponds to the registration campaign measures.

Example of application: Snitch for measuring temperature, humidity and shock for the transport of goods (museums - paintings, aviation, transport measuring benches, refrigerated food ...). This mode is mainly dedicated to TRK, TRE and TRP products.

Reminder: DO NEVER let the unused Logger in “LIVE” MODE – Remember to HIBERNATE your Logger.

Operating principle:

- **Start :** In **‘Live’ Mode**, Logger takes any action in the Live set period (10 sec default), and sends it to the PC. RF Monitor displays measurements without recording them. User can control the operation of the Logger. He can set alert thresholds and set the measurement period required for the measurement campaign to come.
- **Then User selects 'record' mode** to start its measurement campaign.
During this recording campaign:
 - Every minute, the logger sends a presence signal to indicate its state, alerts and the number of measurements in memory.
 - The logger takes his measures according to the 'record' period (10 minutes by default) and systematically saves them in its memory.
- **At the end of the measurement campaign, User stops the recording**, and the logger goes to 'Live' mode. From then on, User can retrieve all the measures of the campaign on his PC by performing a single restitution.

Measurements are then downloaded and stored in the database. Only one logger can record multiple campaigns in a row.

Manufacturer's Address :

NEWSTEO S.A.S.
93 avenue des Sorbiers – ZE Athelia 4
13 600 La Ciotat – France